

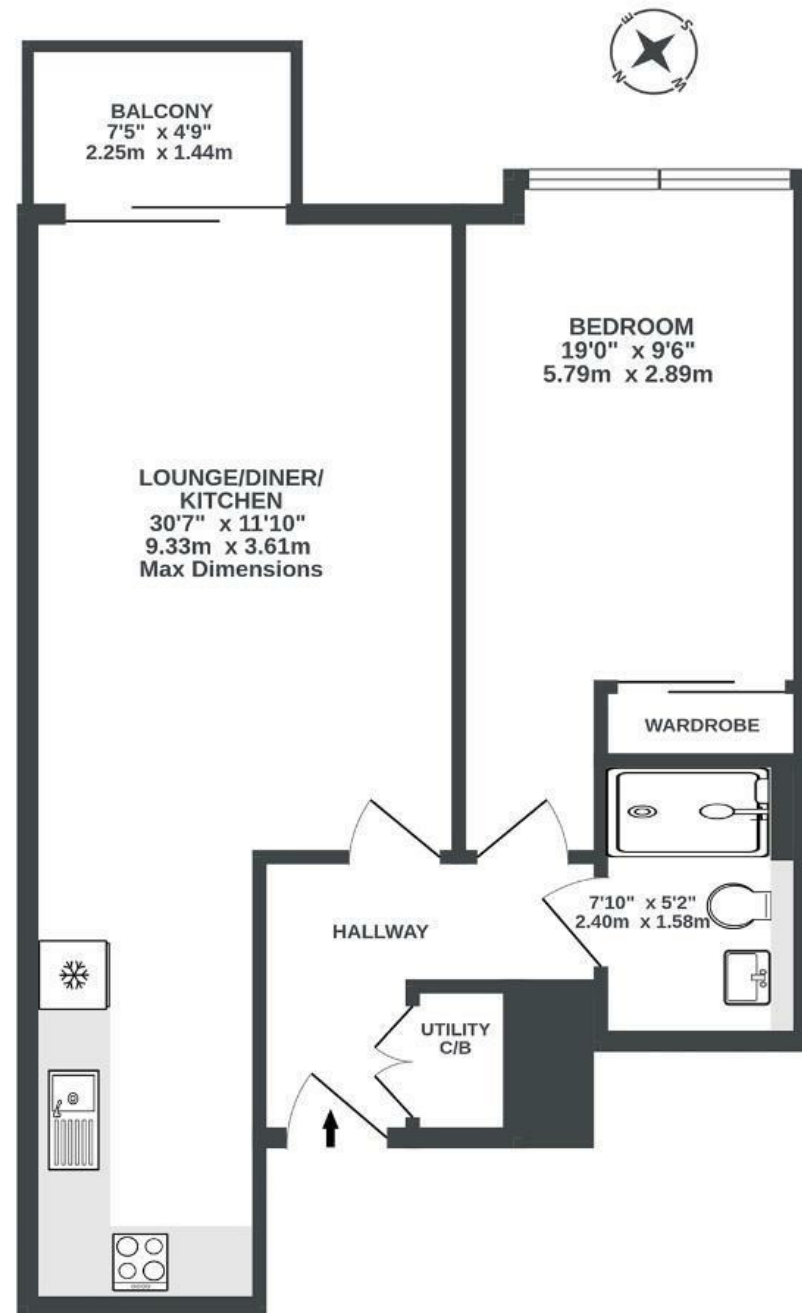
Capstan Room

B E D M I N S T E R

APPROXIMATE FLOOR AREA
52.3 SQM / 563 SQFT



THIRD FLOOR
563 sq.ft. (52.3 sq.m.) approx.



Illustrations are for reference purposes only, measurements are approximate, not to scale.

Boardwalk

St. Johns Road

SOUTHVILLE, BRISTOL



£285,000



1 Bedrooms



Bristol, BS3



1 Bathrooms

1FP

"I've loved living at Capstan Room, having access to the private garden has been a real asset, offering peace and quiet in such a central location. The location has meant I can easily walk everywhere. Being so close to Victoria Park, Wapping Wharf and North Street, has been amazing and I've enjoyed all the great restaurants and stores this area has to offer."

