

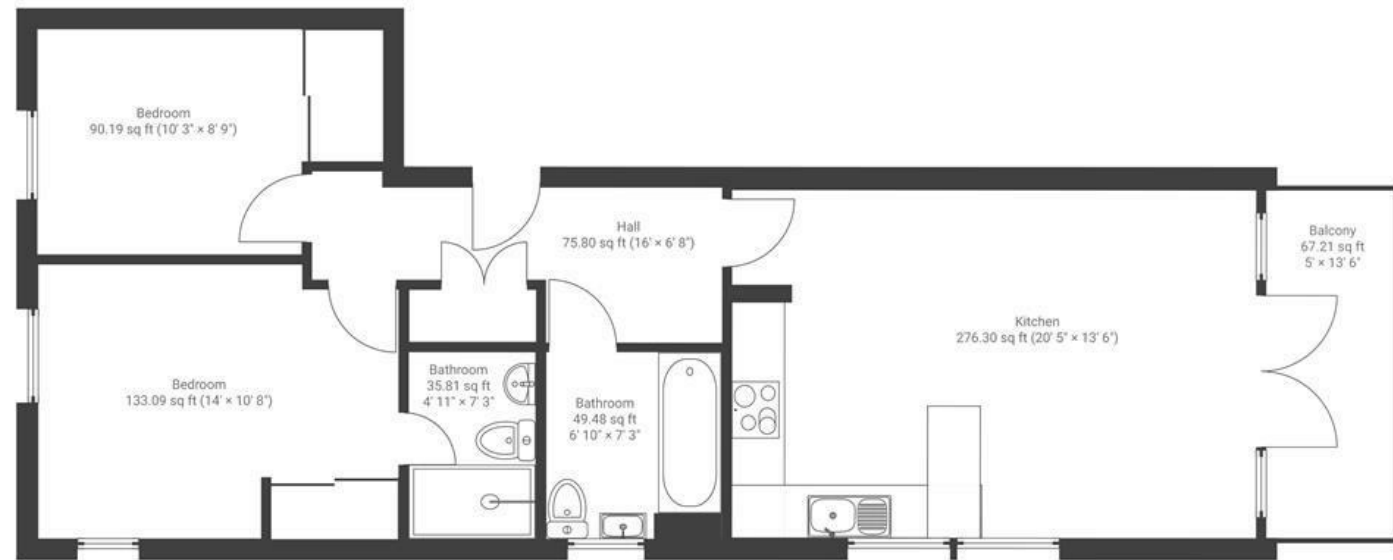
Paintworks

ARNOS VALE

APPROXIMATE FLOOR AREA
70.7 SQM / 761 SQFT



FIRST FLOOR



Boardwalk

Paintworks

ARNOS VALE, BRISTOL



£315,000



2 Bedrooms



Bristol, BS4



2 Bathrooms

3 A W

"We moved into this phase of Paintworks as it was first being built, and we have loved being a part of the growing vibrant community who live here. Despite being fairly centrally located, this flat has been a peaceful haven for us, and we have loved having a floor to ceiling view of the river passing by from our bedroom. The community in Paintworks are very supportive and caring; there is an active Facebook group where residents and business owners can ask questions, swap furniture, and promote social groups and activities. We will really miss living here and being a part of such a wonderful community of people."

