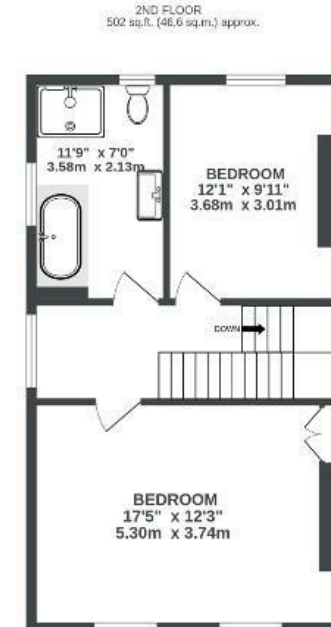
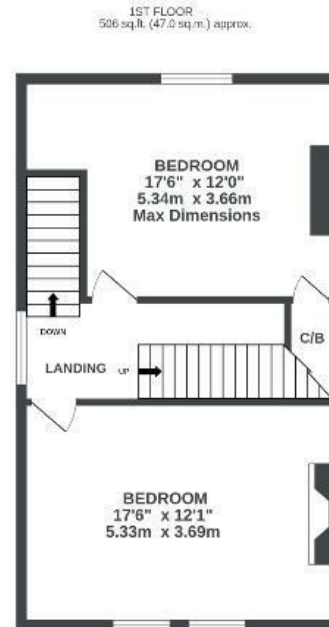
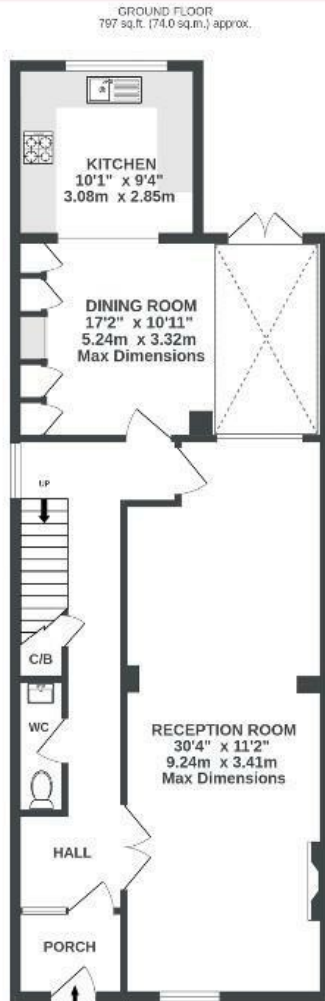


Coronation Road

SOUTHVILLE

APPROXIMATE FLOOR AREA
167.6 SQM / 1805 SQFT



Illustrations are for reference purposes only, measurements are approximate, not to scale.

Boardwalk

Coronation Road

SOUTHVILLE, BRISTOL

£

£600,000

zZz

4 Bedrooms



Bristol, BS3

1RO



2 Bathrooms

We love our house because it has amazing natural light and is one of the largest houses we know of in Southville with four double rooms and views across the river towards Clifton and Hotwells.

It's been really useful for our family to be just a couple of minutes away from an Outstanding school, Ashton Gate Primary School. Sonny Stores and Soukitchen are amazing restaurants just a short walk away, and the Tobacco Factory and Bristol Beer Factory are also luckily just down the road.'

