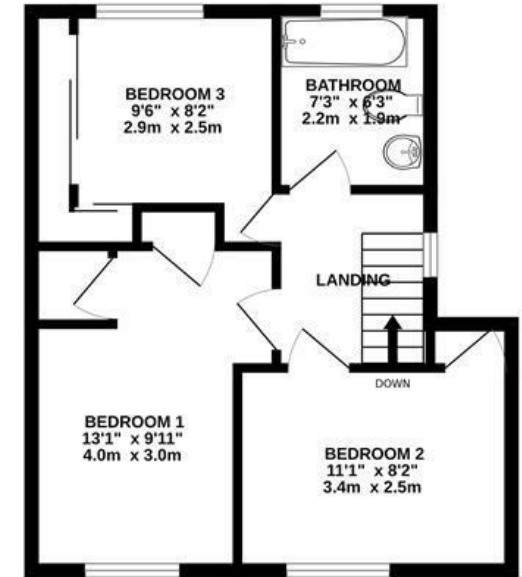
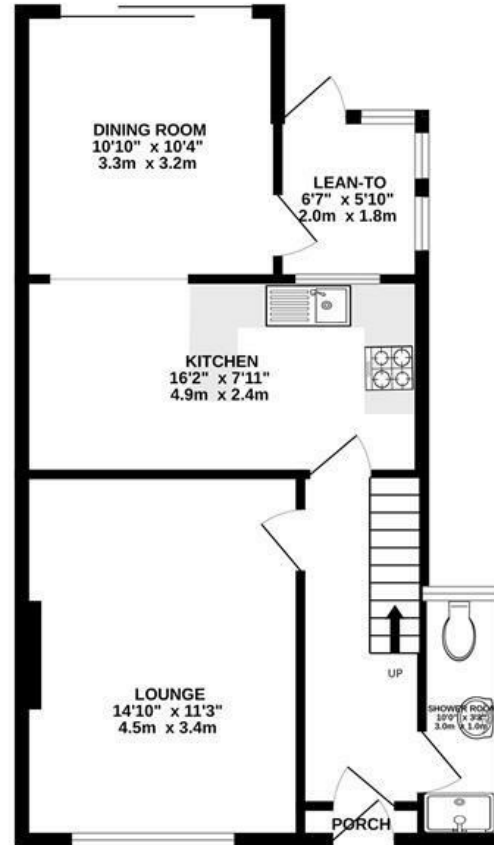


Canvey Close

MANOR FARM

APPROXIMATE FLOOR AREA
88 SQM / 947 SQFT



Illustrations are for reference purposes only,
measurements are approximate, not to scale.

Boardwalk

Canvey Close

, BRISTOL



£360,000



3 Bedrooms



Bristol, BS10

5DD



2 Bathrooms

"We have loved living at Canvey Close. We originally moved here as it was the perfect location for work, and the nearby motorway access was really convenient for travelling to see our families. Evenings at the Beehive and Gloucester Old Spot have been highlights, adding character to our neighbourhood. We are within walking distance from Gloucester Road and Westbury Village; our home offers both convenience and community spirit. Since starting a family, we've enjoyed the abundance the area has to offer with local parks, a skate park, and leisurely swims at the nearby leisure centre, providing endless fun and relaxation. Our peaceful road, with its friendly neighbours, has made living here all the better. As we say goodbye, we're filled with gratitude for the memories and hope the next occupants will find as much happiness here as we have."

