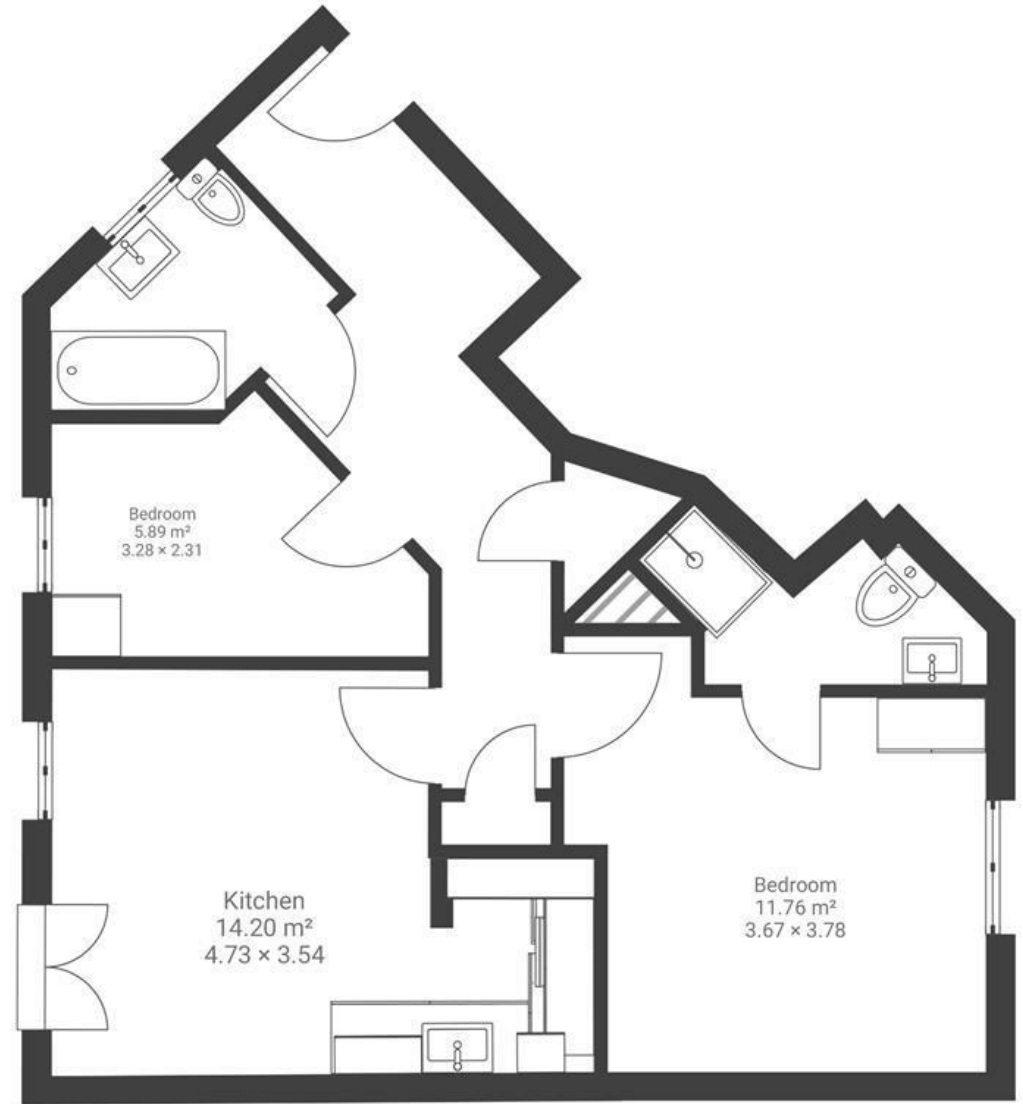


Bartholomew Square

HORFIELD

APPROXIMATE FLOOR AREA
51 SQM / 549 SQFT

THIRD FLOOR



Boardwalk

Bartholomews

HORFIELD, BRISTOL

£

£250,000

z z z

2 Bedrooms



Bristol, BS7

OOB



2 Bathrooms

"This is a lovely light and airy flat, warm in winter and full of sunshine. It is in a great location but it is also really quiet. I loved being so close to Horfield Common and Leisure centre/gym and always enjoyed walking down the Gloucester Road, although there is a frequent bus service from the stops by the entrance to the development. There are three good pubs in the immediate area and lots of popular bars and cafes close by."

