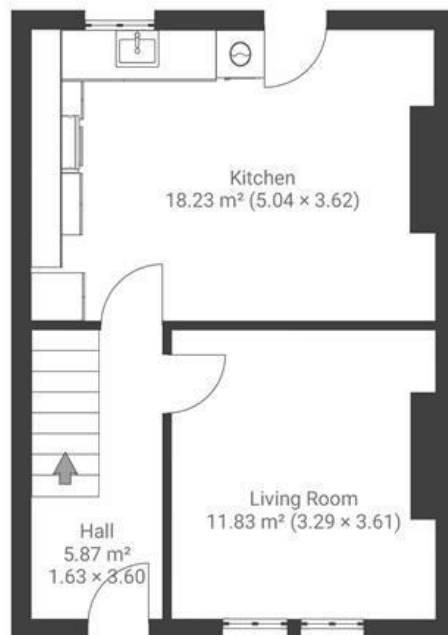


Narrowways

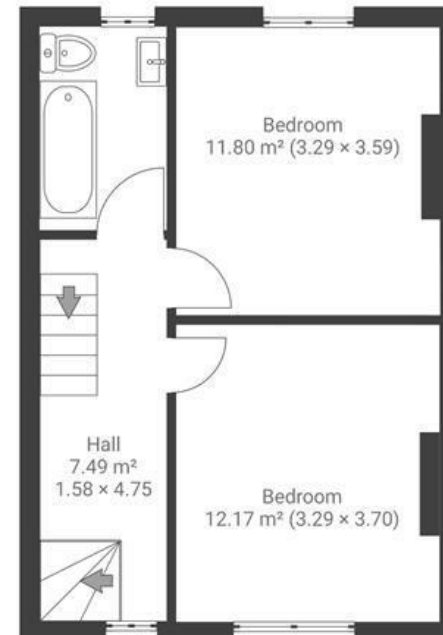
ST WERBURGHS

APPROXIMATE FLOOR AREA
97.75 SQM / 1052 SQFT

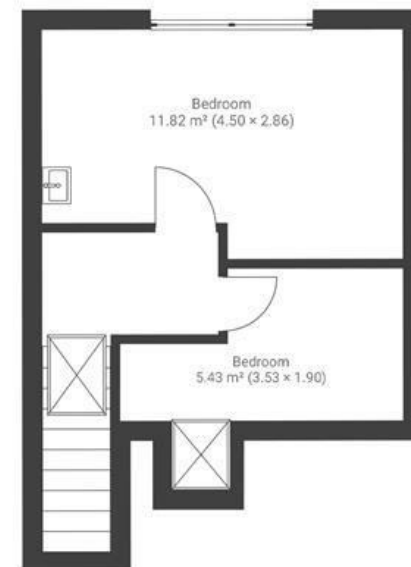
GROUND FLOOR



FIRST FLOOR



SECOND FLOOR



~~Boardwalk~~

Narrowways Road

ST WERBURGH'S, BRISTOL

£

£450,000

zZz

3 Bedrooms



Bristol, BS2

9XR



1 Bathrooms

"Affectionately known as the Hamlet of St Werburghs, the community spirit on Narrowways Road is like nothing we've ever experienced before, and unlikely ever will again. Our favourite thing about our home itself is the beautiful light. The flood of light throughout the house, even on the greyest of days makes it feel so welcoming, and the garden gets the sun throughout the day too. Narrowways Nature Reserve - accessed via a little lane at the end of our cul-de-sac - has been the year-round backdrop for our time as a young and growing family and is the perfect way to drop down into the heart of St Werburghs for coffee & brunch at our home from home, the Farm Cafe. Poppi burgers, Wiper & True pints, The Miners Arms (best pub in Bristol) & the Farm Pub garden. Family meals out at Napolita, fruit & veg from Chaya, delicious breads & organic goodies from Better Foods, and samosas from Sonnies. Parents endlessly chat away in Mina Road Park and let's not forget Purdown, Eastville Park (with epic wildlife lake) & Snuff Mills all nearby. We couldn't have asked for a better house, neighbours and

