

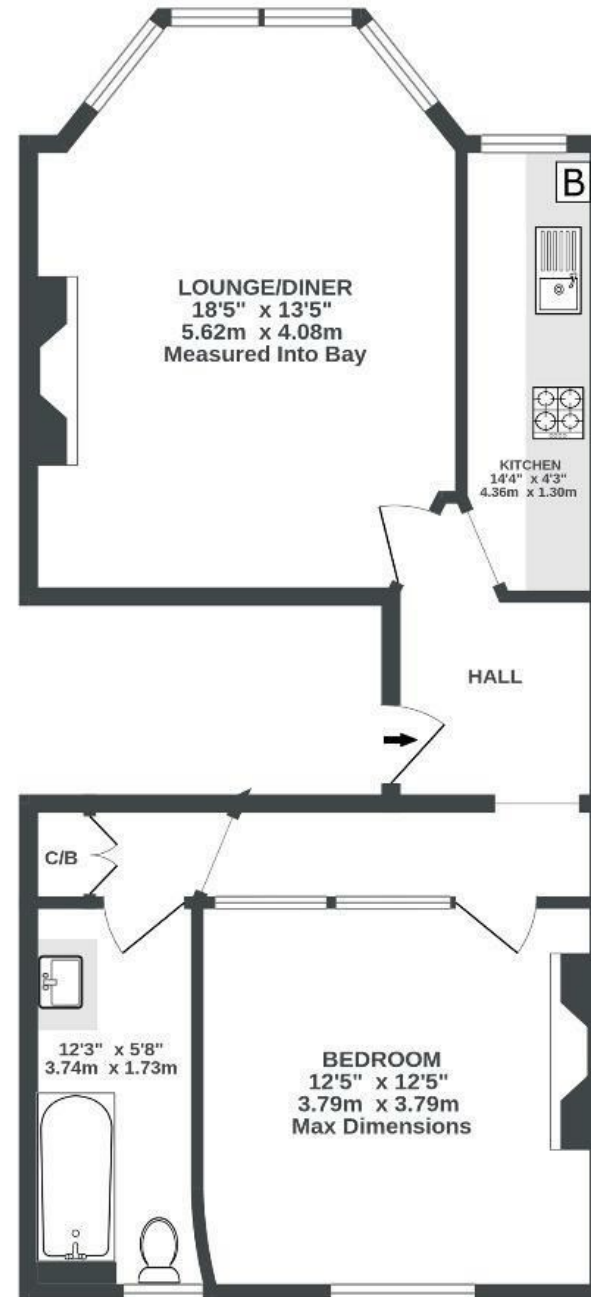
# Alma Road

## CLIFTON

APPROXIMATE FLOOR AREA  
54.9 SQM / 591 SQFT



FIRST FLOOR  
591 sq.ft. (54.9 sq.m.) approx.



Illustrations are for reference purposes only, measurements are approximate, not to scale.

Boardwalk

# Alma Road

CLIFTON, BRISTOL



£320,000



1 Bedrooms



Bristol, BS8



1 Bathrooms

2DG

*"Alma Road has been a fantastic location for my first home in Bristol. I fully renovated the flat to a high standard, and it feels so spacious and full of natural light. It's a perfect outlook from the lounge bay window, and the original Victorian fireplace tiles are a standout feature. The area has so much to offer – an array of excellent restaurants on your doorstep, the shops of Whiteladies Road and Clifton Village, just a short walk away. It's joy to have the bustle of the city close by, whilst having such easy access to beautiful surrounding greenery, enjoying local walks on the Downs and Leigh Woods."*

