

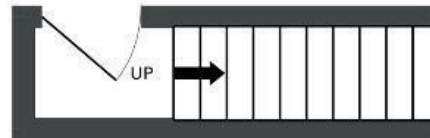
# Belmont Road

ST ANDREWS

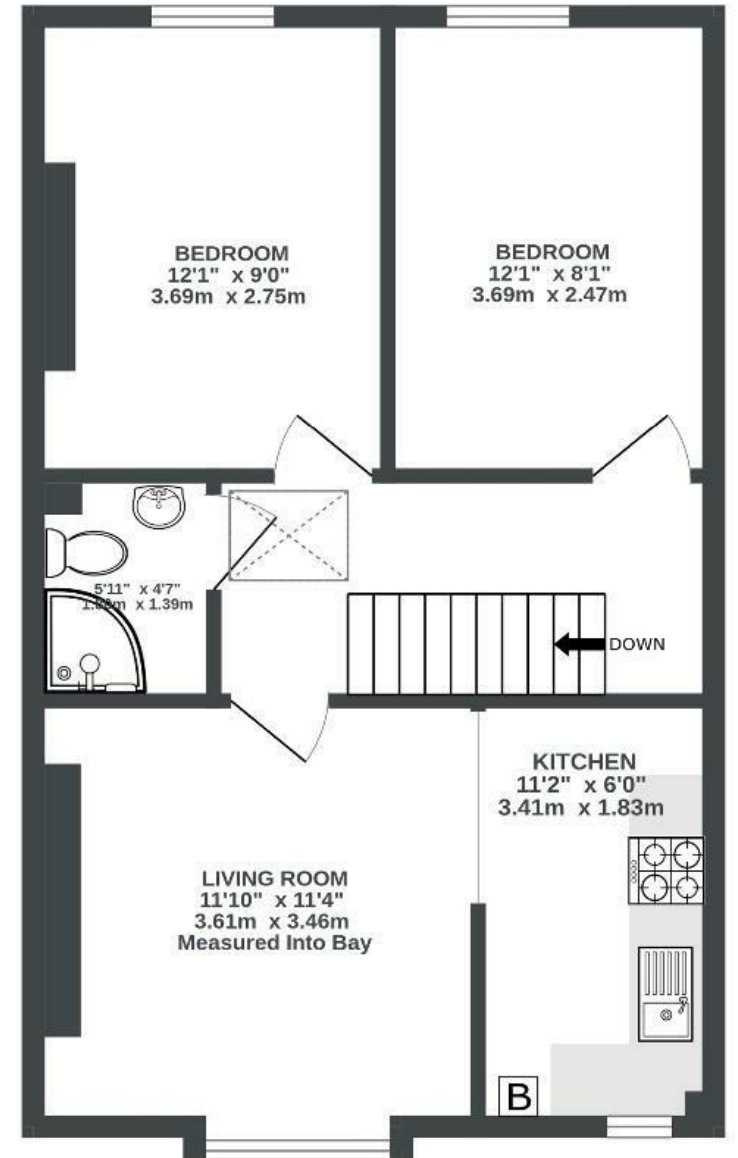
APPROXIMATE FLOOR AREA  
49.1 SQM / 529 SQFT



ENTRANCE  
31 sq.ft. (2.8 sq.m.) approx.



SECOND FLOOR  
498 sq.ft. (46.3 sq.m.) approx.



Illustrations are for reference purposes only, measurements are approximate, not to scale.

Boardwalk

# Belmont Road

ST. ANDREWS, BRISTOL

£

£295,000

zZz

2 Bedrooms



Bristol, BS6

5AS



1 Bathrooms

*"I have absolutely loved every minute of living in the flat over the past five years. Sloped ceilings and wonky walls give it a cosy charm in winter, yet it's bright and sunny in summer with a big skylight and incredible views across to the Downs. Living on the top floor, the flat is a chilled haven within easy walking distance from the vibrancy of the city. Nestled perfectly between the characterful Gloucester Rd with its independent shops and friendly and fun vibe and the relaxing tree lined greenery of close by St Andrews park, it really is a very special place to live."*

