

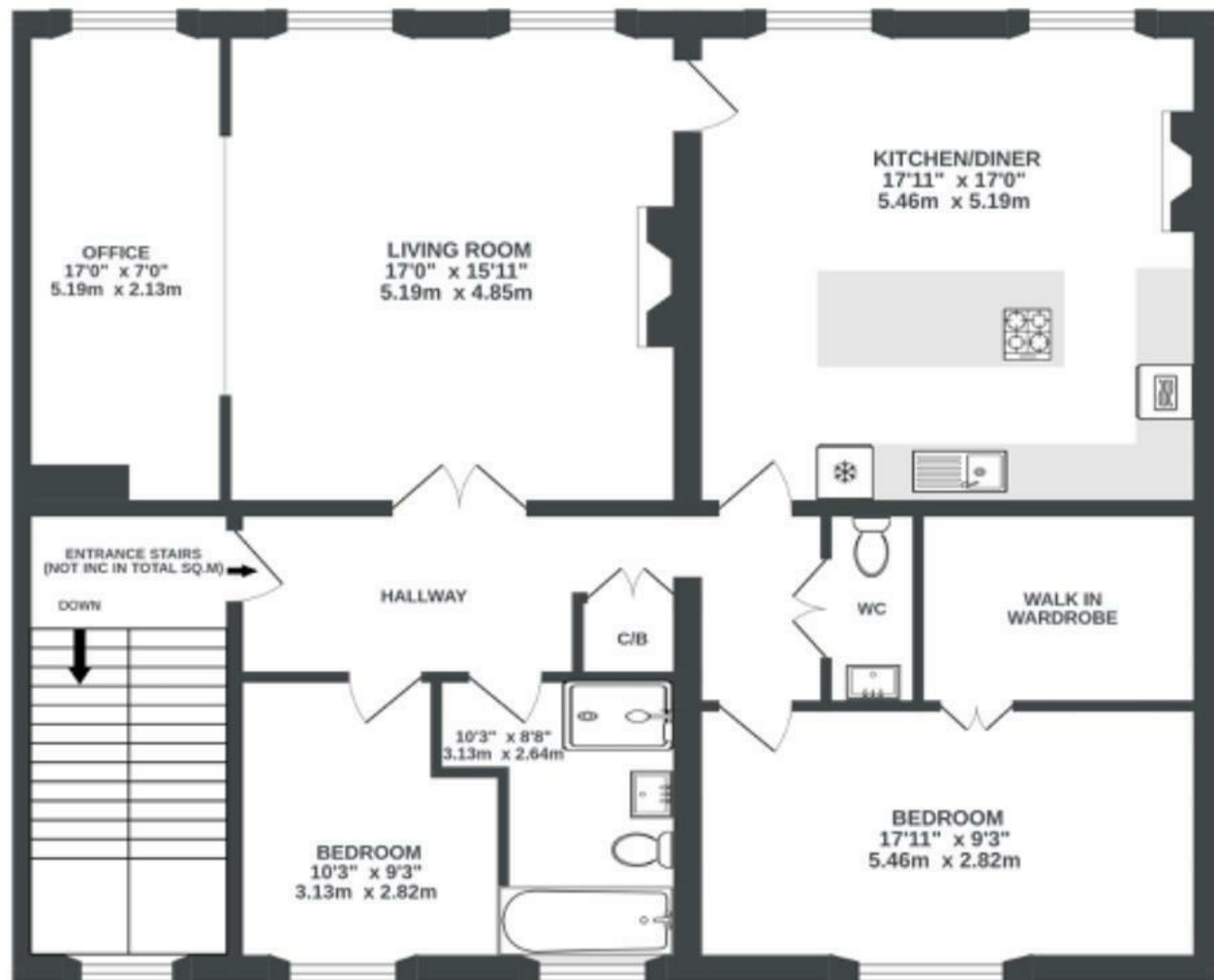
# Cornwallis Crescent

CLIFTON

APPROXIMATE FLOOR AREA  
113.5 SQM / 1222 SQFT



SECOND FLOOR  
1222 sq.ft. (113.5 sq.m.) approx.



Illustrations are for reference purposes only, measurements are approximate, not to scale.

Boardwalk

# Cornwallis

CLIFTON, BRISTOL

£

£1,000,000

ZZZ

2 Bedrooms

📍

Bristol, BS8

4PH

🦆

1 Bathrooms

*"Living on Cornwallis Crescent for the last 10 years has been really special. When we moved to Bristol we were struck by the big colourful Georgian buildings and fell in love with their period features. Being able to walk up to Clifton Village for a morning cup of coffee has been ideal, I hope that the incoming buyer enjoys it as much as we have."*

