

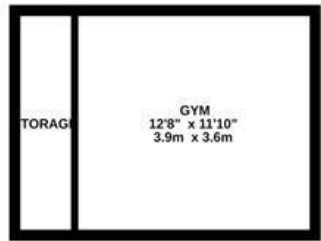
# Conham Hill

## HANHAM

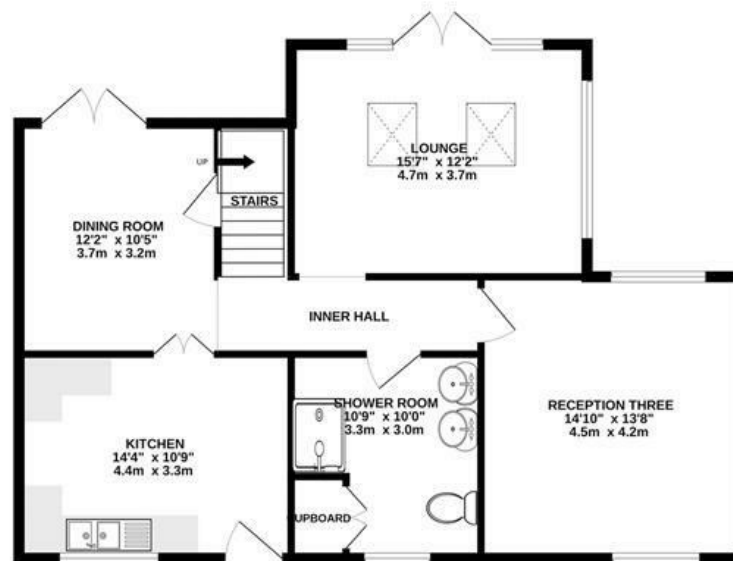
APPROXIMATE FLOOR AREA  
160 SQM / 1730 SQFT



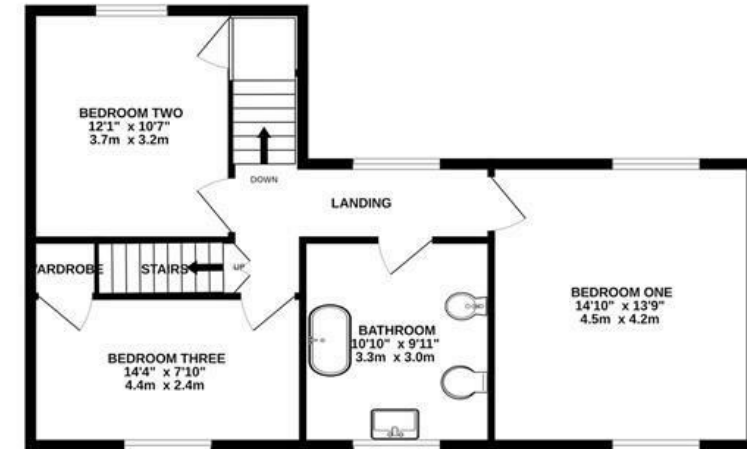
LOWER GROUND FLOOR  
387 sq.ft. (17.4 sq.m.) approx.



GROUND FLOOR  
866 sq.ft. (80.5 sq.m.) approx.



1ST FLOOR  
677 sq.ft. (62.9 sq.m.) approx.



Illustrations are for reference purposes only,  
measurements are approximate, not to scale.

**Boardwalk**

# Conham Hill

HANHAM, BRISTOL



£660,000



4 Bedrooms



Bristol, BS15



2 Bathrooms

3AW

*"Stepping out onto our veranda we are transported to a calm and verdant countryside with bird song and views that melt away the stress of the day. With Conham River Park on our doorstep, we take evening summer bike rides with a chilled glass of cider by the river before heading home. The convenient location to the City centre and Bath are the reasons we have loved living here for over 28 years, with jaw-dropping views where you get a ringside seat for fireworks and the balloon festival".*

