

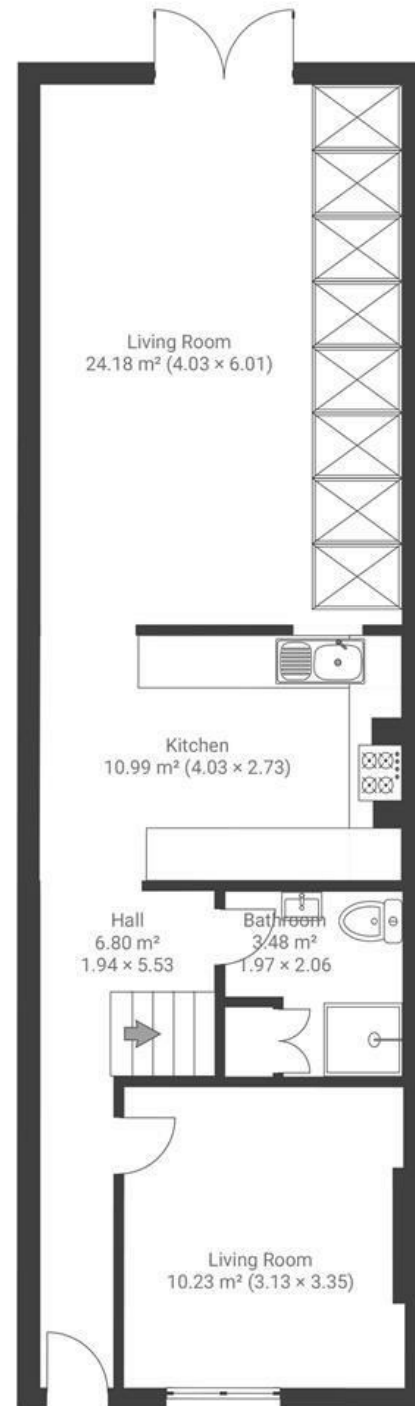
New Buildings

FISHPONDS

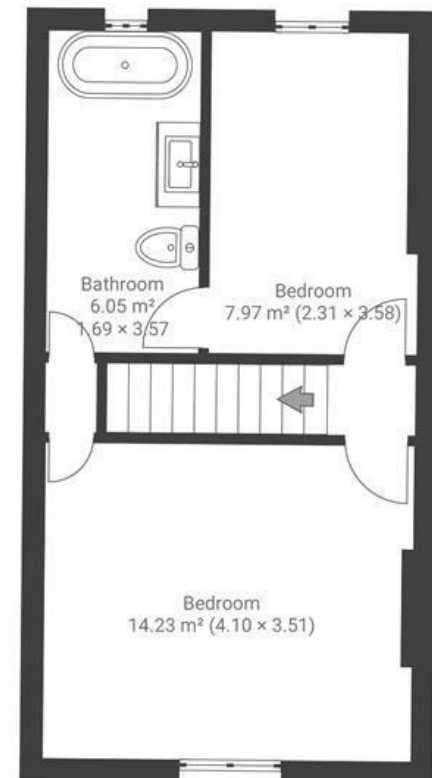
APPROXIMATE FLOOR AREA
91.9 SQM / 989 SQFT



GROUND FLOOR



FIRST FLOOR



Boardwalk

New Buildings , BRISTOL

£

£415,000

ZZZ

2 Bedrooms



Bristol, BS16

2BT



1 Bathrooms

“We have loved living in Fishponds, the neighbourhood is so warm and friendly. We’ll really miss nipping to The Star for a quick pint or FED for a morning coffee.”

