

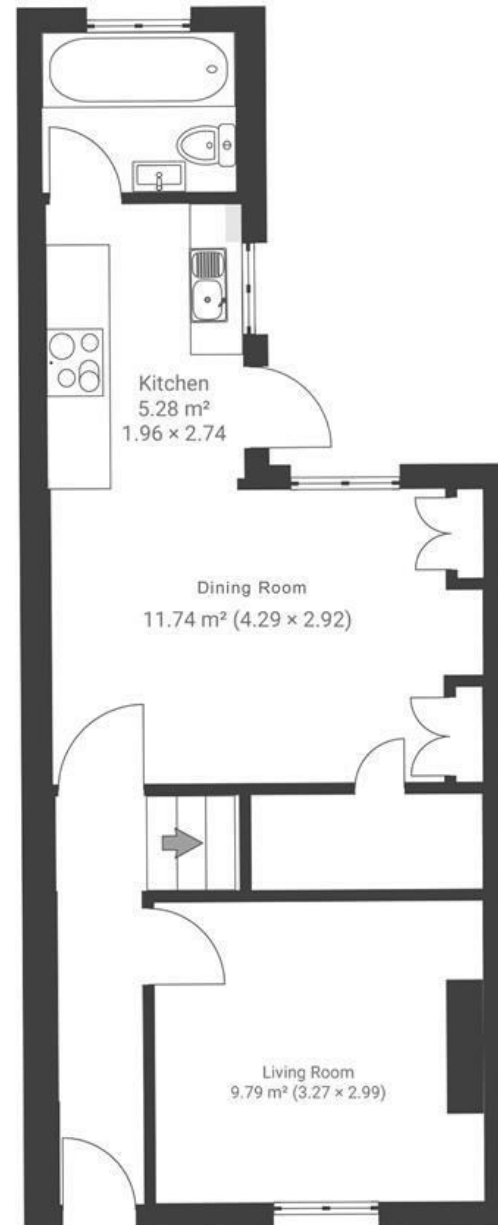
Maidstone Street

VICTORIA PARK

APPROXIMATE FLOOR AREA
75.2 SQM / 809 SQFT



GROUND FLOOR



FIRST FLOOR



Boardwalk

Maidstone Street , BRISTOL

£

£385,000

zZz

2 Bedrooms



Bristol, BS3

4SW



1 Bathrooms

'I simply loved living on Maidstone street, it had everything I needed within walking distance. The street itself was full with friendly neighbours and I made lots of friends in the surrounding area. Victoria park is just amazing, there was never a day I didn't walk round it. In summer I'd often meet friends there for picnics and my partner and I would often go over and sit there with a drink on a nice Summer's Evening. The beautiful local bakery - the Bristol loaf is also a must visit just on the other side of the park. The best sourdough around!'

