

Fitzgerald Road

KNOWLE

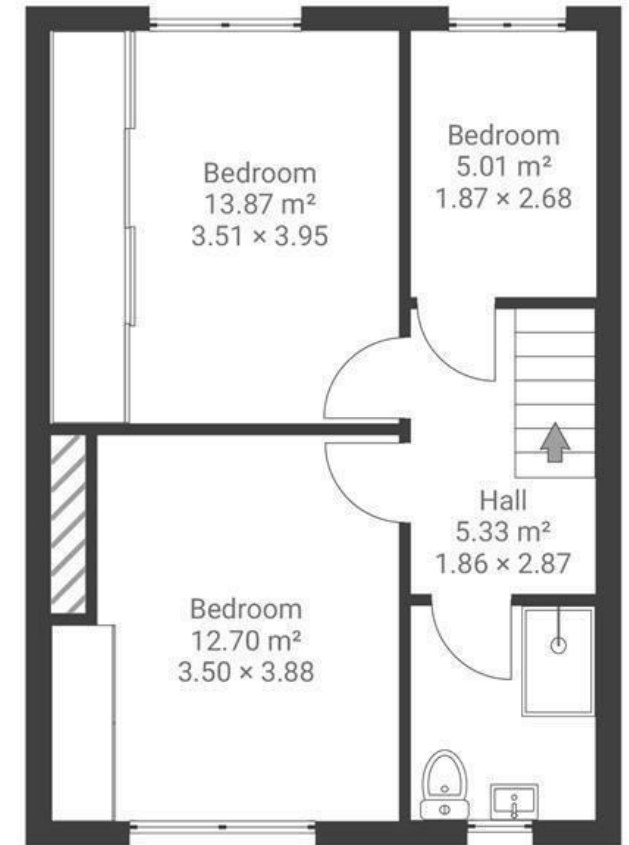
APPROXIMATE FLOOR AREA
87.6 SQM / 942 SQFT



GROUND FLOOR



FIRST FLOOR



Boardwalk

Fitzgerald Road

KNOWLE, BRISTOL



£475,000



3 Bedrooms



Bristol, BS3

5DD



1 Bathrooms

"Our parents were here for many years, and it has been a lovely community to grow up in. We will miss the garden massively and all the wonderful neighbours we have become close with. There are loads of great green spaces nearby to enjoy walking the dog, including Victoria and Perrett Park. We are also selling the property with planning approved for a one/two bedroom bungalow at the bottom of the plot, to hopefully appeal to families who need multi-generational living."

