

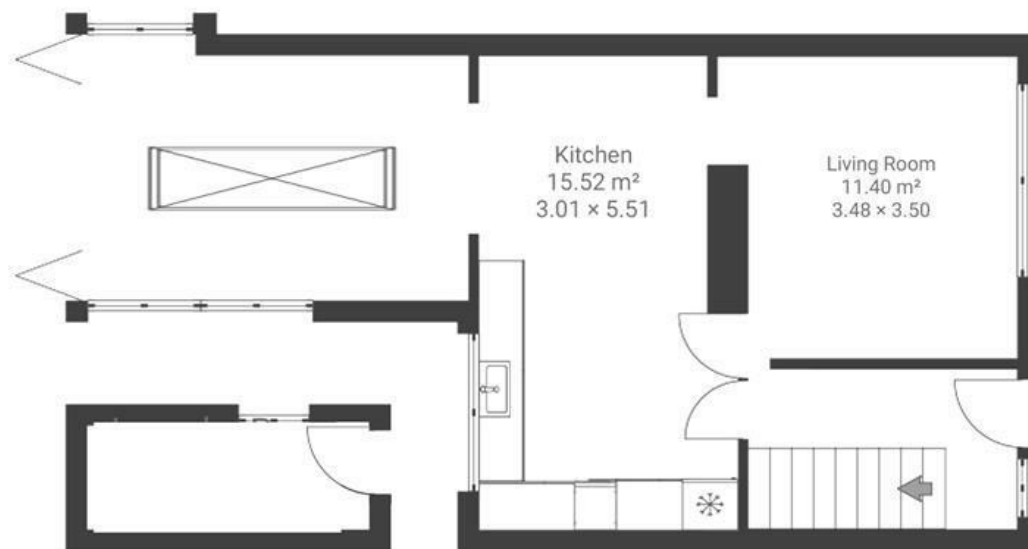
Whitland Road

BISHOPSWORTH

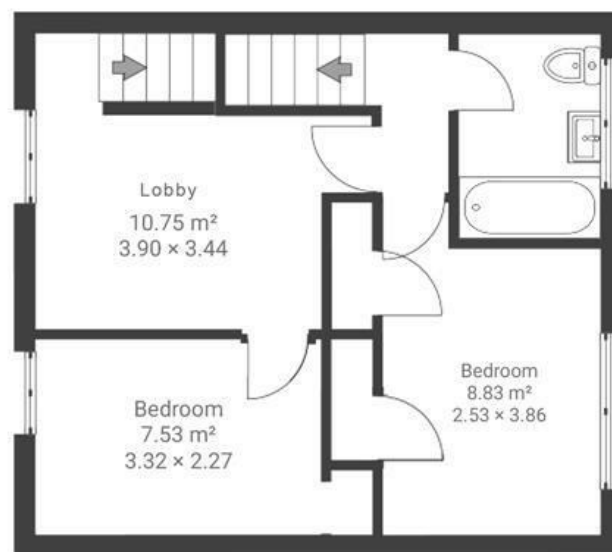
APPROXIMATE FLOOR AREA
105 SQM / 1130 SQFT



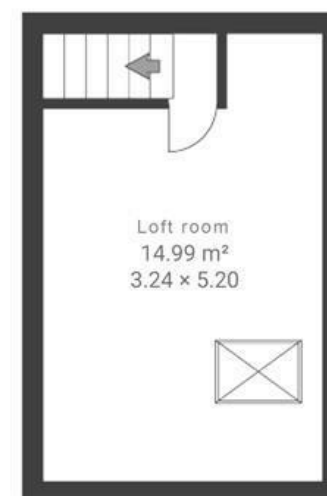
GROUND FLOOR



FIRST FLOOR



SECOND FLOOR



~~Boardwalk~~

Whitland Road

BISHOPSWORTH, BRISTOL



£280,000



2 Bedrooms



Bristol, BS13
906



1 Bathrooms

"We have lived in Whitland Road for many years and enjoyed watching our family & home expand over our time here. We are very close to shops, schools and transports routes. We are also in walking distance to a lovely stream tucked behind Imperial Park/Hartcliffe Way which we do regularly on a Sunday morning. There are some lovely parks in walking distance and a five minute drive up to chew valley lakes which we enjoy going to, but it's now time that another couple/family enjoy our home which we've done for many years."

