

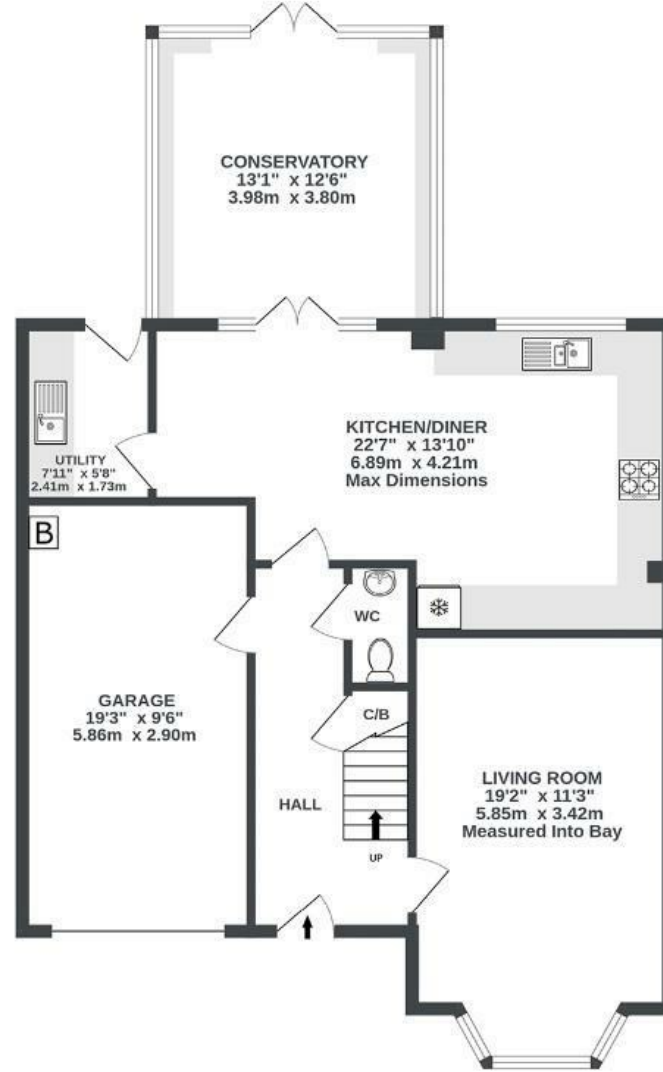
Henry Shute Road

STOKE GIFFORD

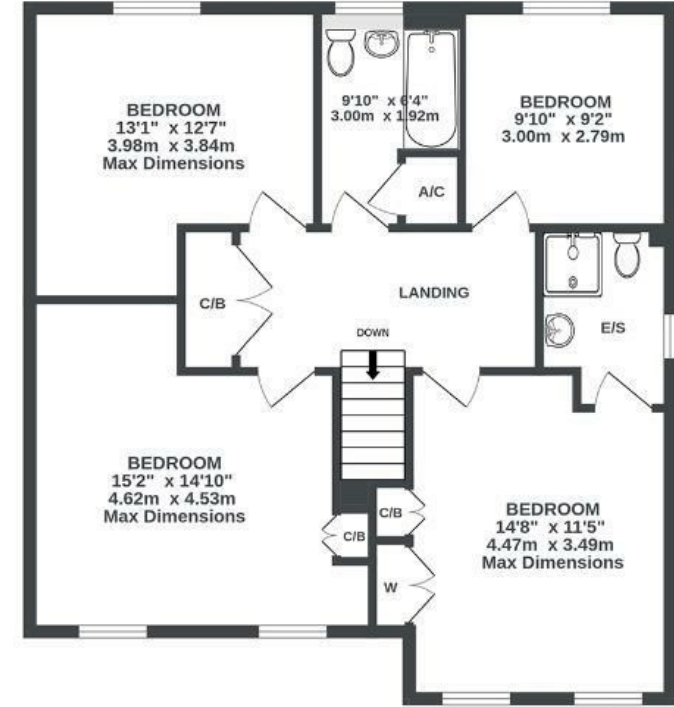
APPROXIMATE FLOOR AREA
166.8 SQM / 1795 SQFT



GROUND FLOOR
981 sq.ft. (91.2 sq.m.) approx.



1ST FLOOR
814 sq.ft. (75.6 sq.m.) approx.



Illustrations are for reference purposes only, measurements are approximate, not to scale.

Boardwalk

Henry Shute

, BRISTOL



£615,000



4 Bedrooms



Bristol, BS16



2 Bathrooms

1 AG

"We have made some fantastic memories in this wonderful family home. There are so many great things about this home, the first being the excellent location with easy walking access to the metrobus network into city centre, close to Bristol Parkway train station, Cribbs Causeway and just off the M4. There is an open greenery just outside with a children's play park and a nature walking trail just steps away. Our neighbours are all very friendly with a strong sense of community spirit. We are confident that the next owner will enjoy this home as much as we do."

