

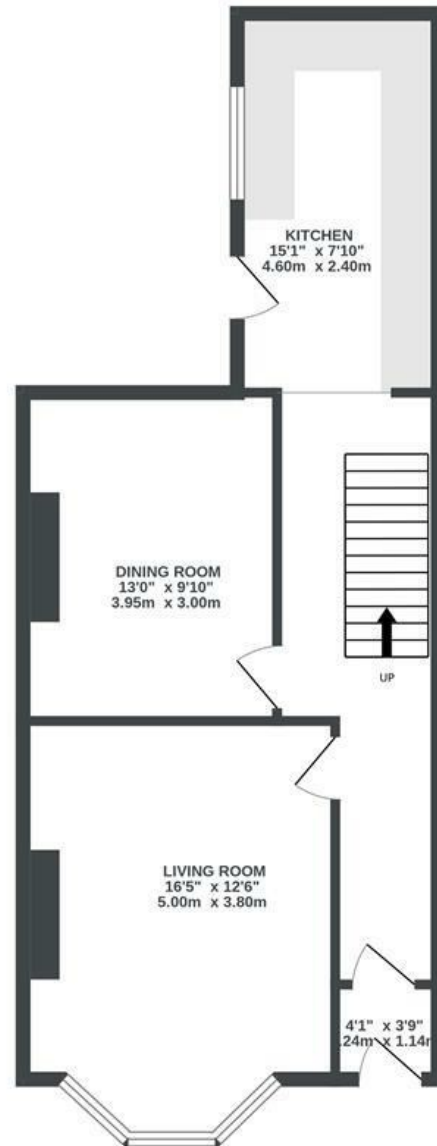
Arley Park

COTHAM

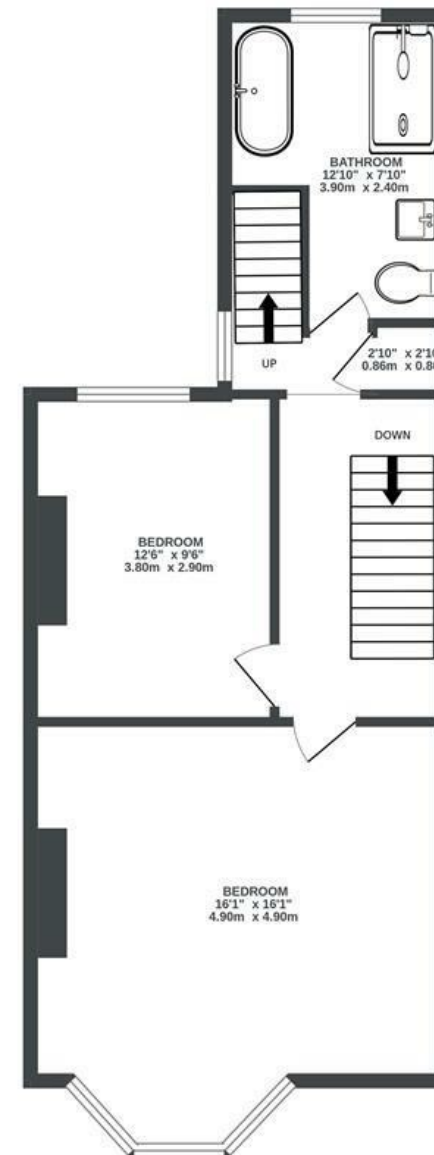
APPROXIMATE FLOOR AREA
119.1 SQM / 1282 SQFT



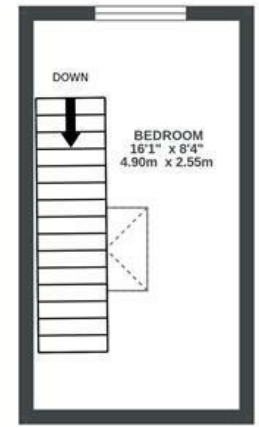
GROUND FLOOR



FIRST FLOOR



SECOND FLOOR



Boardwalk

Arley Park

COTHAM, BRISTOL

£

£675,000

zZz

3 Bedrooms



Bristol, BS6

5PI



1 Bathrooms

"Arley Park was a fantastic home for us. There is such a lovely community in the area and we'll miss being able to walk down to Gloucester Road for a cup of coffee or Pint in the Sun."

