

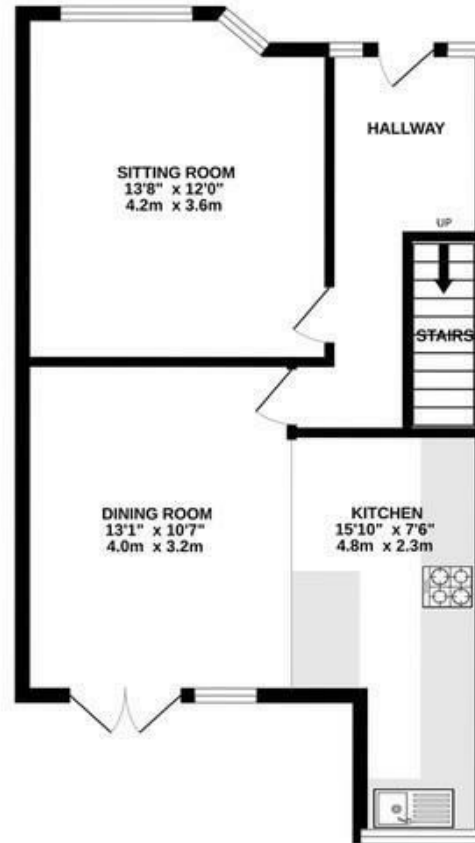
Eastlyn Road

BEDMINSTER DOWN

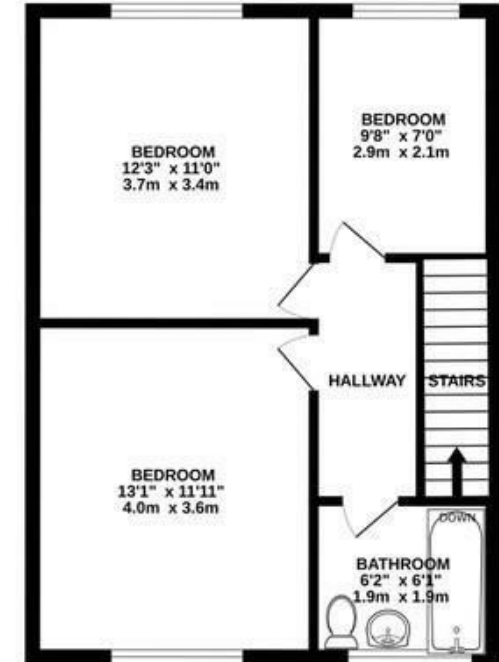
APPROXIMATE FLOOR AREA
88 SQM / 952 SQFT



GROUND FLOOR
495 sq.ft. (46.0 sq.m.) approx.



1ST FLOOR
456 sq.ft. (42.4 sq.m.) approx.



TOTAL FLOOR AREA: 952 sq.ft. (88.4 sq.m.) approx.
Whilst every attempt has been made to ensure the accuracy of the floorplan contained here, measurements of doors, windows, rooms and any other items are approximate and no responsibility is taken for any error, omission or mis-statement. This plan is for illustrative purposes only and should be used as such by any prospective purchaser. The services, systems and appliances shown have not been tested and no guarantee as to their operability or efficiency can be given.
Made with Metropix ©2024

Boardwalk

Eastlyn Road

BEDMINSTER DOWN, BRISTOL



£385,000



3 Bedrooms



Bristol, BS13

7H7



1 Bathrooms

"We love the space that our home offers, the open plan kitchen/diner has made for great hosting along with the sunny patio for pizza nights and drinks with friends. There is an easy walk down to North Street for the tobacco factory market, the theatre and the many cafes and restaurants. Closer to home is Zion Café which have loads of events including drag bingo, yoga and tribute nights. We are a short drive away from Clifton for brunch or bus to town. Great walks at Manor Woods, Ashton Court and Somerset which we will sorely miss having so close."

