

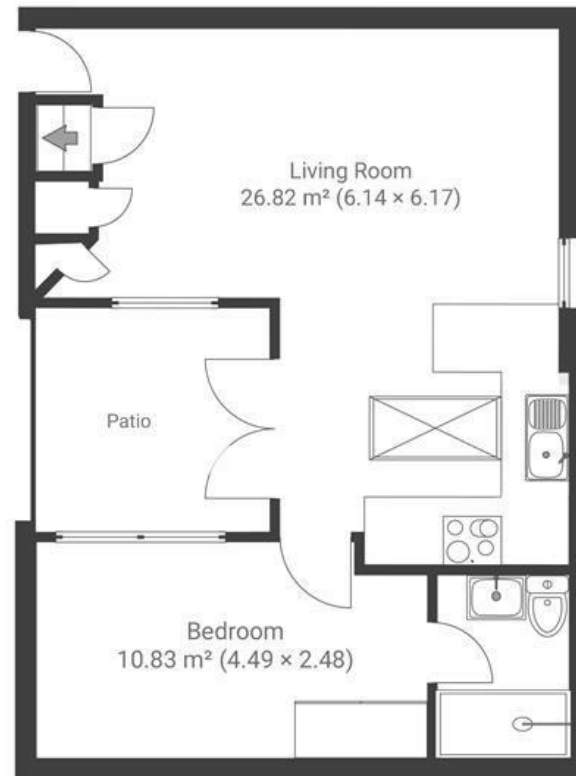
Zion Heights

BISHOPSWORTH

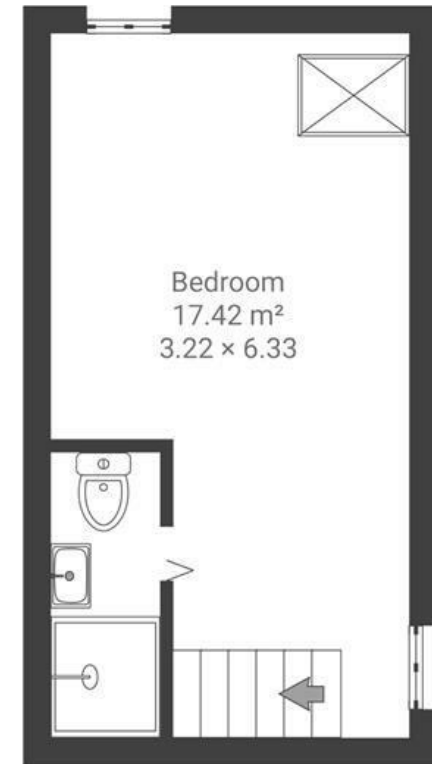
APPROXIMATE FLOOR AREA
65.2 SQM / 702 SQFT



GROUND FLOOR



FIRST FLOOR



Boardwalk

Bishopsworth

, BRISTOL

£

£270,000

ZLZ

2 Bedrooms



Bristol, BS13

7 IW



2 Bathrooms

"We love living so close to the countryside, whilst also being a 10 minute drive to the City Centre and all the cafes and bars on North Street. As a young professional couple Zion Heights has been the perfect first home for us. Public transports links to the bus and train are in a short walkable distance. We enjoy picking up a coffee at the neighbouring Zion Community Centre and walking through the local nature reserve or appreciating the views of Clifton from the Bedminster Downs."

