

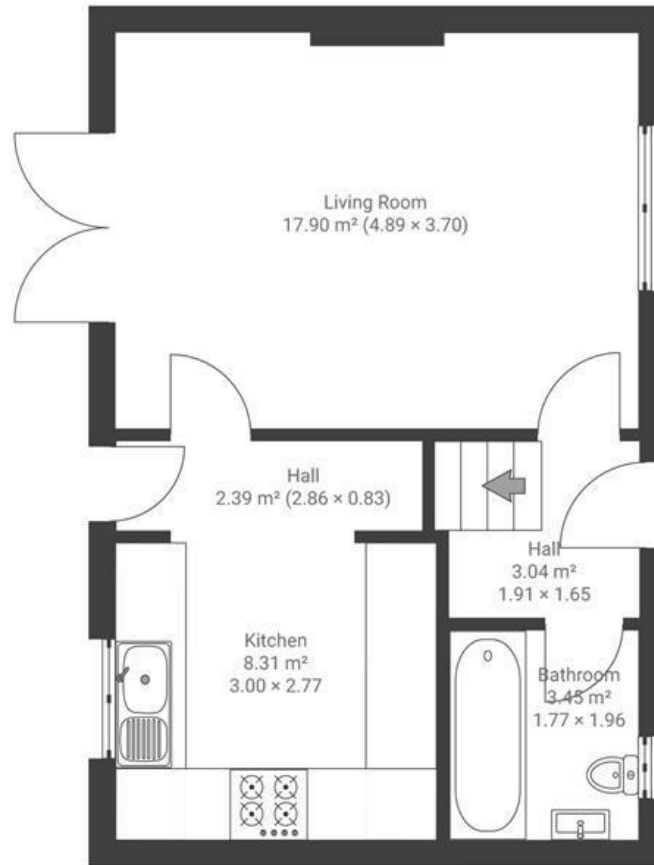
Marksbury Road

BEDMINSTER

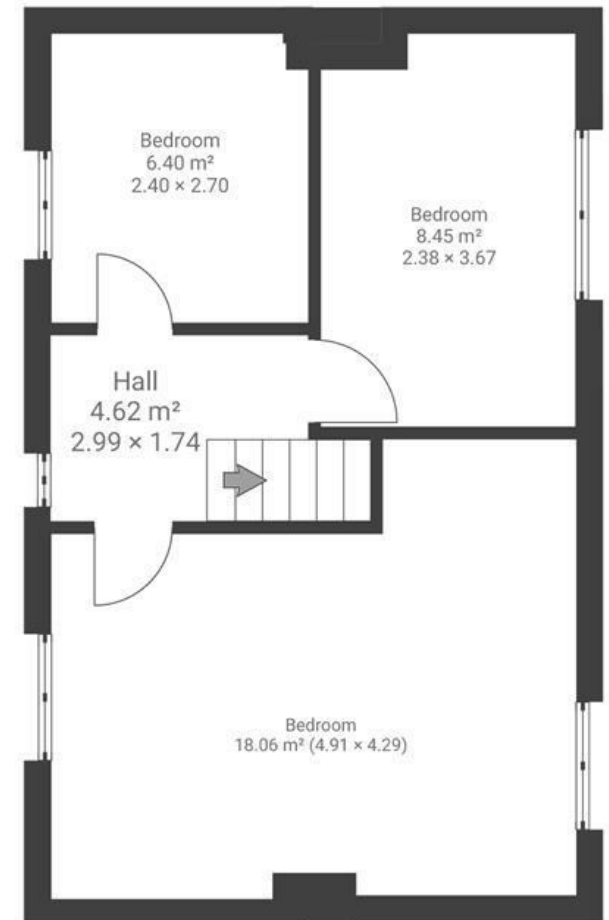
APPROXIMATE FLOOR AREA
75.6 SQM / 814 SQFT



GROUND FLOOR



FIRST FLOOR



~~Boardwalk~~

Marksbury Road

, BRISTOL



£350,000



3 Bedrooms



Bristol, BS3



1 Bathrooms

5.11

"Marksbury Road is in such a convenient location, with Victoria Park nearby and Temple Meads, North Street, and the centre all within walking distance or by bus just 2 mins away. The living room is cool in summer and warm with the logburner in winter. We really love the garden, having BBQs, growing veg and sitting with a drink on the deck. It's great having a bit of nature too, with wildflowers, grasshoppers, damselflies and even hedgehogs."

