

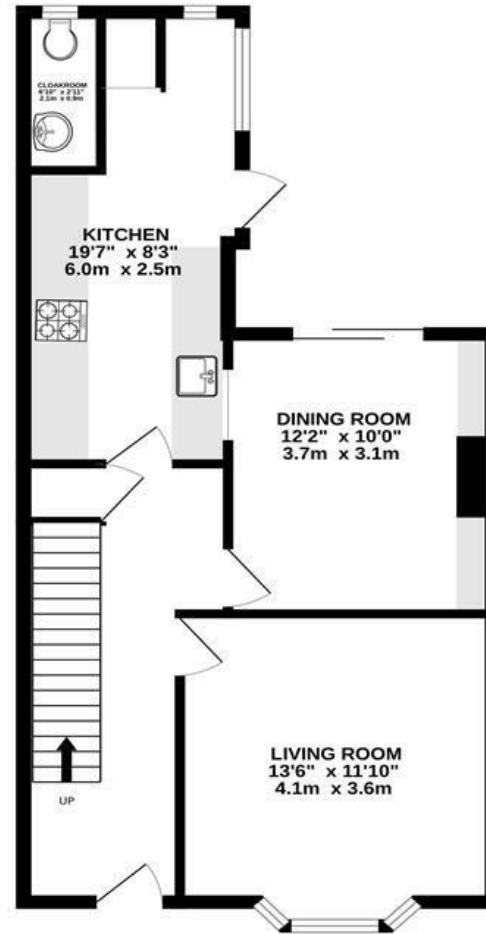
Ilchester Crescent

BEDMINSTER DOWN

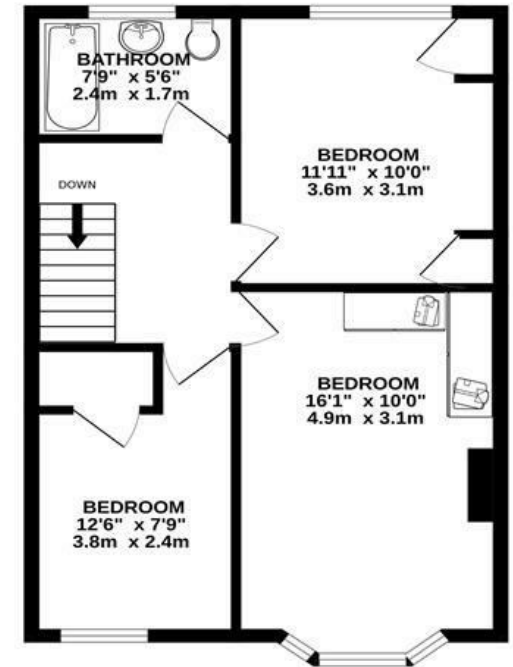
APPROXIMATE FLOOR AREA
96 SQM / 1033 SQFT



GROUND FLOOR
551 sq.ft. (51.2 sq.m.) approx.



1ST FLOOR
482 sq.ft. (44.7 sq.m.) approx.



TOTAL FLOOR AREA : 1033 sq.ft. (96.0 sq.m.) approx.
Whilst every attempt has been made to ensure the accuracy of the floorplan contained here, measurements of doors, windows, rooms and any other items are approximate and no responsibility is taken for any error, omission or mis-statement. This plan is for illustrative purposes only and should be used as such by any prospective purchaser. The services, systems and appliances shown have not been tested and no guarantee as to their operability or efficiency can be given.
Made with Metropix ©2024

Boardwalk

Ilchester , BRISTOL

£

£425,000



Bristol, BS13
7HW

zZz

3 Bedrooms



2 Bathrooms

"This house has been a haven for us, and we can't believe our luck to have such a brilliant mix of proximity to the city, space, and fabulous views. Since adding bifold doors we can enjoy views over Ashton court from the dining table - the bifolds open onto our back garden which has gated access directly onto Ilchester Green, a beautiful green space popular with dog walkers. We spend a lot of our free time taking advantage of the short drive to the Mendips, going on walks and exploring country pubs. The crescent is home to a community that are always ready to help each other."

