

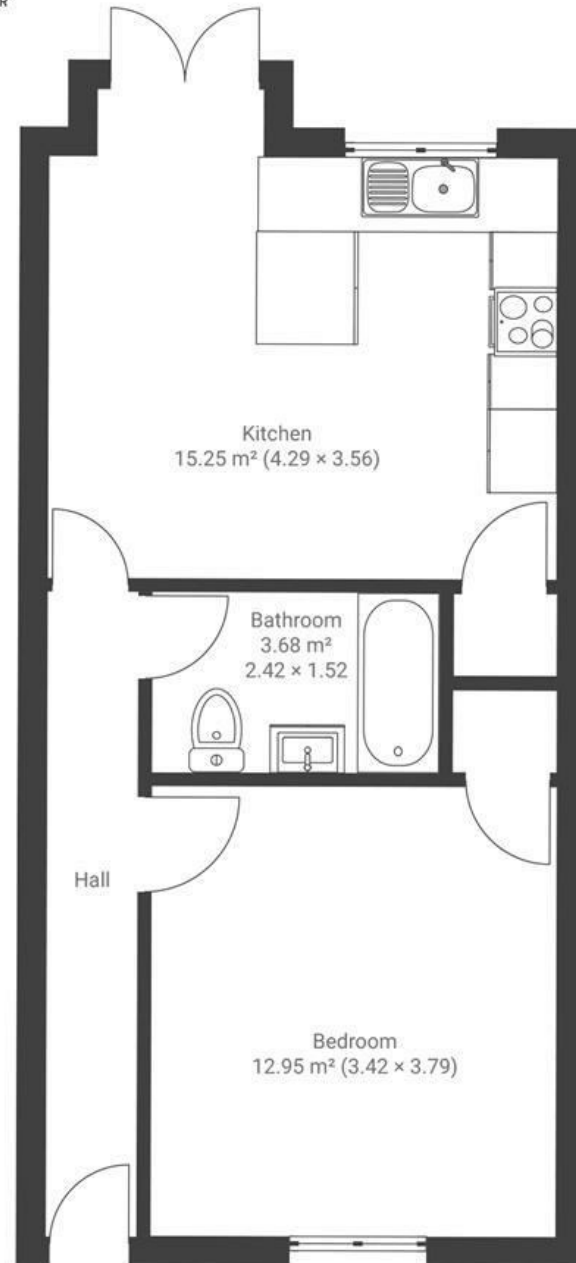
Albert Park

MONTPELIER

APPROXIMATE FLOOR AREA
40 SQM / 431 SQFT



LOWER GROUND FLOOR



Boardwalk

Albert Park

, BRISTOL

£

£250,000



Bristol, BS6
5NF

zzz

1 Bedrooms



1 Bathrooms

'We've enjoyed bringing a new lease of life to this garden flat. We particularly like the open plan kitchen / living space with lots of natural daylight leading out to the garden. The location is ideal for city centre living being walking distance to Gloucester Road, Stokes Croft and the city centre.'

