

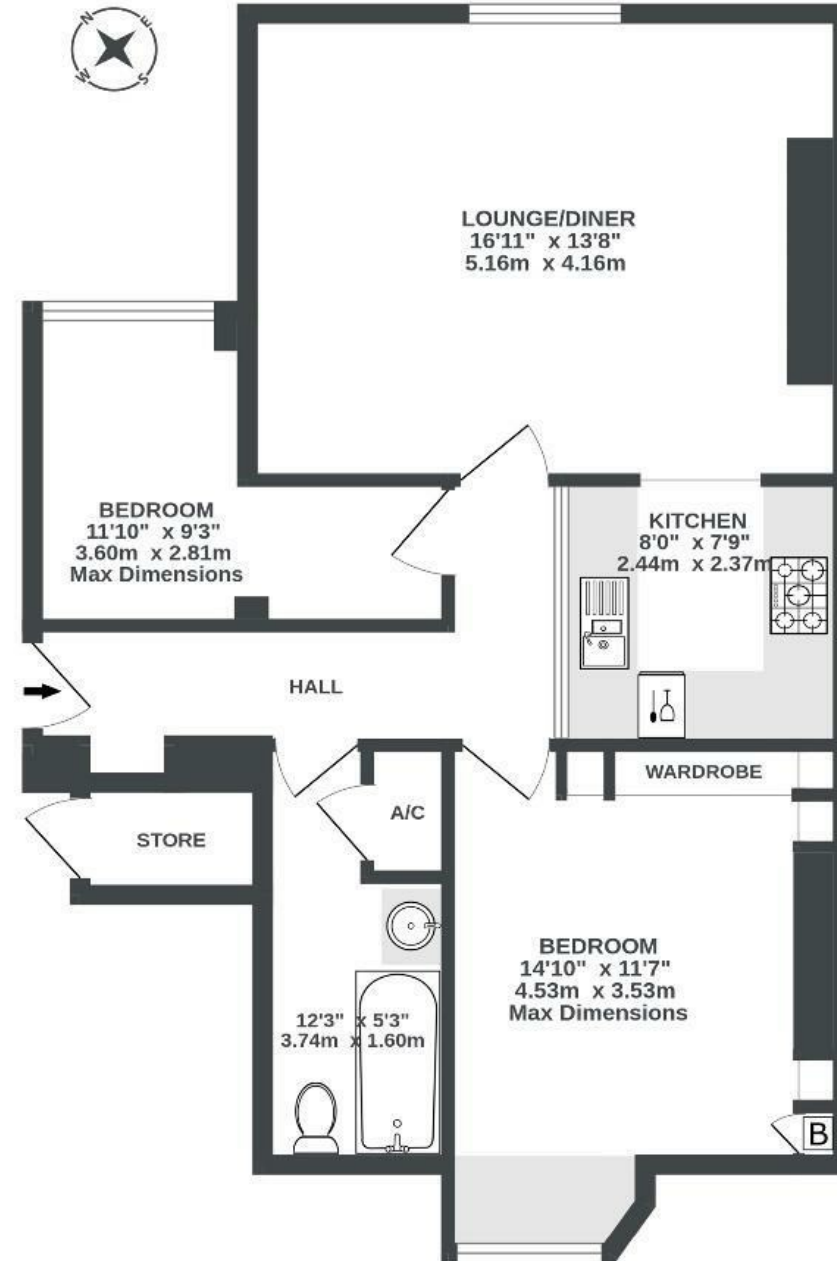
Sydenham Hill

C O T H A M

APPROXIMATE FLOOR AREA
61.2 SQM / 659 SQFT



LOWER GROUND FLOOR
659 sq.ft. (61.2 sq.m.) approx.



Illustrations are for reference purposes only, measurements are approximate, not to scale.

Boardwalk

Sydenham Hill

, BRISTOL



£350,000



2 Bedrooms



Bristol, BS6

5SN



1 Bathrooms

"I love to sit in my bedroom window seat, it's so light and peaceful there. I have a table and chairs in the communal garden where we eat in the summer, that's a lovely bonus"

