

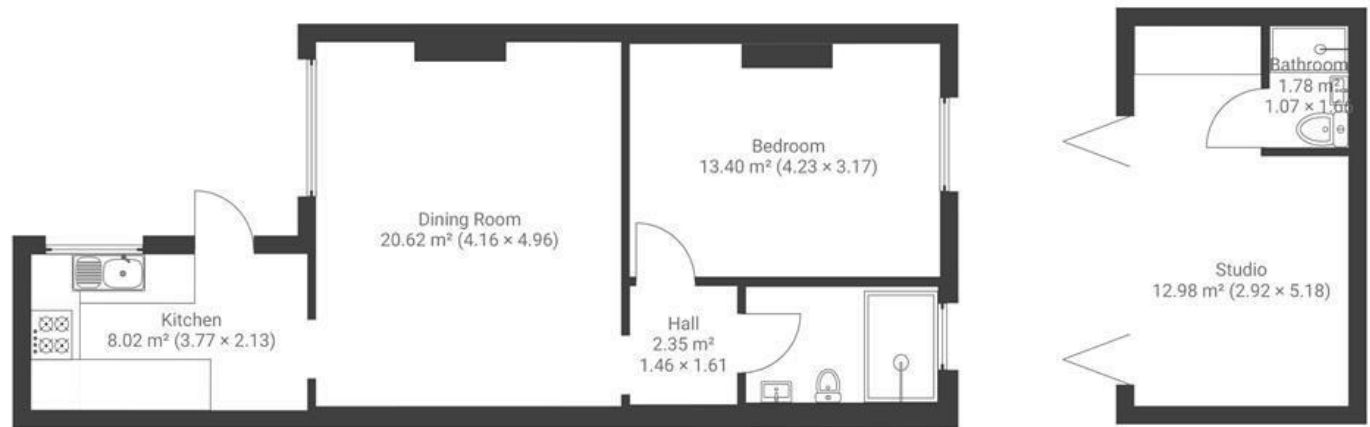
# Vicarage Road

## SOUTHVILLE

APPROXIMATE FLOOR AREA  
65.1 SQM / 700 SQFT



GROUND FLOOR



Boardwalk

# Vicarage Road

## SOUTHVILLE, BRISTOL



£315,000



1 Bedrooms



Bristol, BS3  
1PD



1 Bathrooms

*"Our flat is in the best location for North Street, harbour, Wapping Wharf and centre of town. We love taking long walks to Ashton Court, stopping off at the garden centre, having a beer at the Cottage by the harbour and having gorgeous wines and food in Kask and Cor...and all the other great places. We love the community we have built here with our lovely neighbours. We are lucky to have our own entrance, which is straight in to our courtyard, it's like a hidden sanctuary where you can leave all the hustle and bustle behind. We converted the stable to a flexible studio for home working, yoga, music and a place for family and friends to stay."*

