

Boardwalk

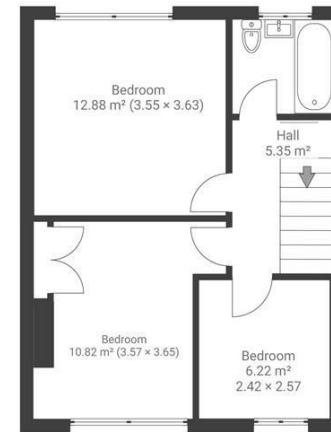
Kennard Rise, , BRISTOL

Kennard Rise KINGSWOOD

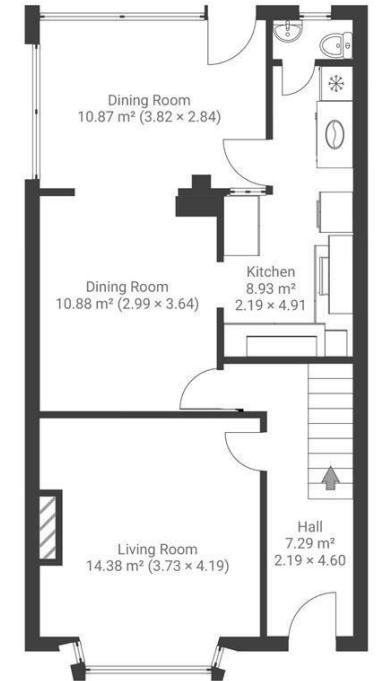
APPROXIMATE FLOOR AREA
98.33 SQM / 1058 SQFT



GROUND FLOOR



FIRST FLOOR



Boardwalk

Kennard Rise, , BRISTOL



£350,000



3 Bedrooms



Bristol, BS15

8AF



1 Bathrooms



"We have loved living here! It's a home where we feel comfy, cozy, and at ease. We have created many fond memories with family and friends here. We have been happy to call this our home for the past 4 years. We also love the location, being a short walk away from shops, parks, and restaurants."

