

Boardwalk

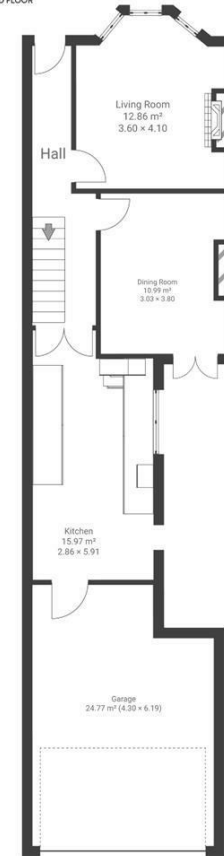
Chelsea Park , BRISTOL

Chelsea Park EASTON

APPROXIMATE FLOOR AREA
100.7 SQM / 1083 SQFT



GROUND FLOOR



FIRST FLOOR



Boardwalk

Chelsea Park , BRISTOL

£

£440,000

zzz

3 Bedrooms



Bristol, BS5
6AQ



1 Bathrooms

"I never knew what it was like to live within a community until I moved to Chelsea Park! The street is amazing - everyone knows, looks out for, and shares with each other. I love the location of my house, it's at the quiet end of the street, right next to the cycle path and so it's just greenery out the front windows and the roof terrace gets the sun nearly all day in the summer. I like to sit up there with breakfast in the morning and watch the sunset across the city in the evening."

