

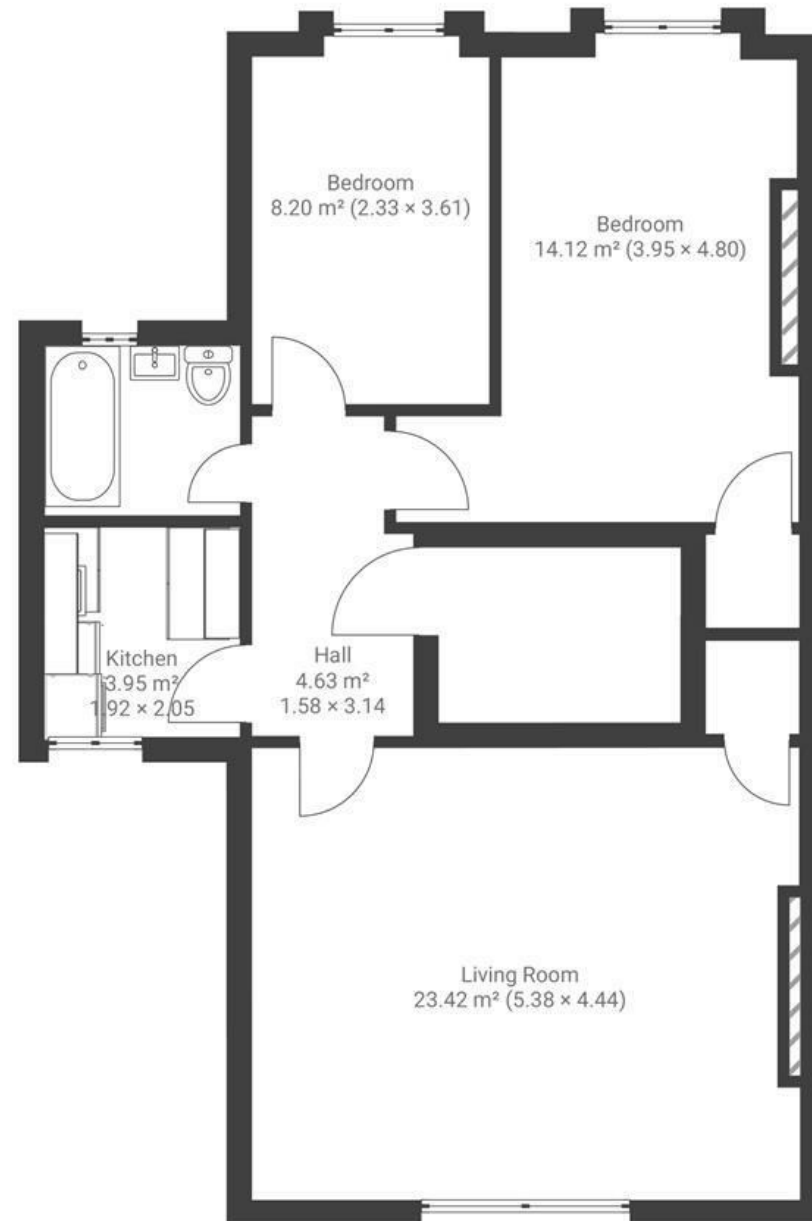
Redland Road

REDLAND

APPROXIMATE FLOOR AREA
62.3 SQM / 670 SQFT



TOP FLOOR



Boardwalk

Redland Road

, BRISTOL



£380,000



2 Bedrooms



Bristol, BS6

6XX



1 Bathrooms

"We've loved living on Redland Road and knew it was home as soon as we saw the view over the rooftops. We've enjoyed weekends exploring Gloucester Road and Whiteladies; we pick up a coffee at Burra and pop into Bristol Artisan. Redland Park and Redland Green Tennis Club provide cute dog-spotting and respite after work. The Shakespeare gastropub is just over the

