

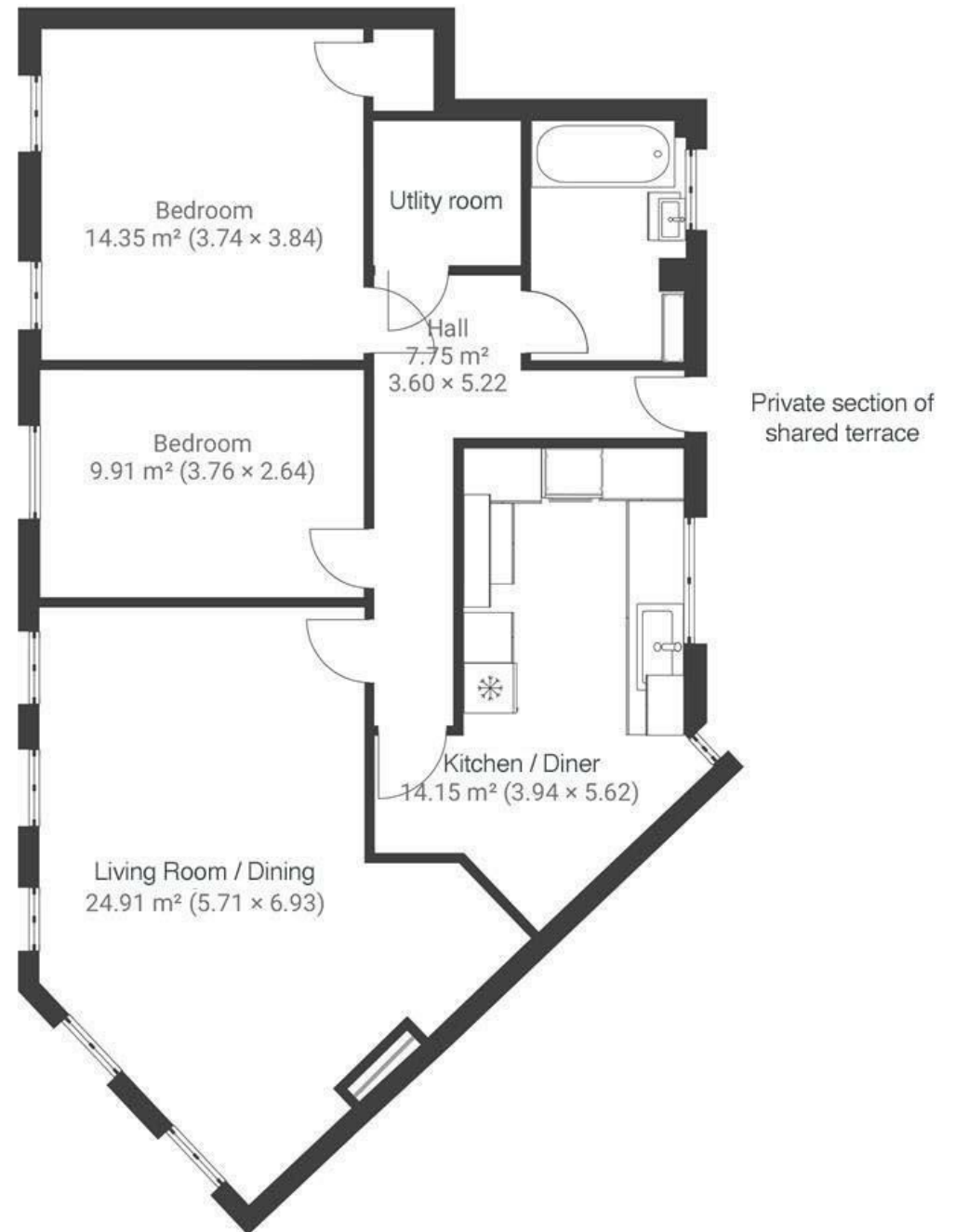
# Ashton Drive

## BEDMINSTER

APPROXIMATE FLOOR AREA  
83.8 SQM / 902 SQFT



GROUND FLOOR



**Boardwalk**

# Ashton Drive

, BRISTOL



£295,000



2 Bedrooms



Bristol, BS3



1 Bathrooms

2PIU

*"When looking out of the windows at Ashton Drive, you'd be forgiven for thinking you're living in an adorable countryside village. With its village green and postbox outside, its local shop and friendly owner, Ashton Court and rolling hills within its view, and neighbours who greet each other when passing by, it's easy to forget you're in BS3! We have loved living here, and would often cycle through our local park (Ashton Court) on a Sunday, ending up at a gorgeous bakery in Clifton within twenty minutes. We are spoilt for choice with cafes, bars, restaurants and markets on North Street, as well as excellent schools within walking distance"*

