

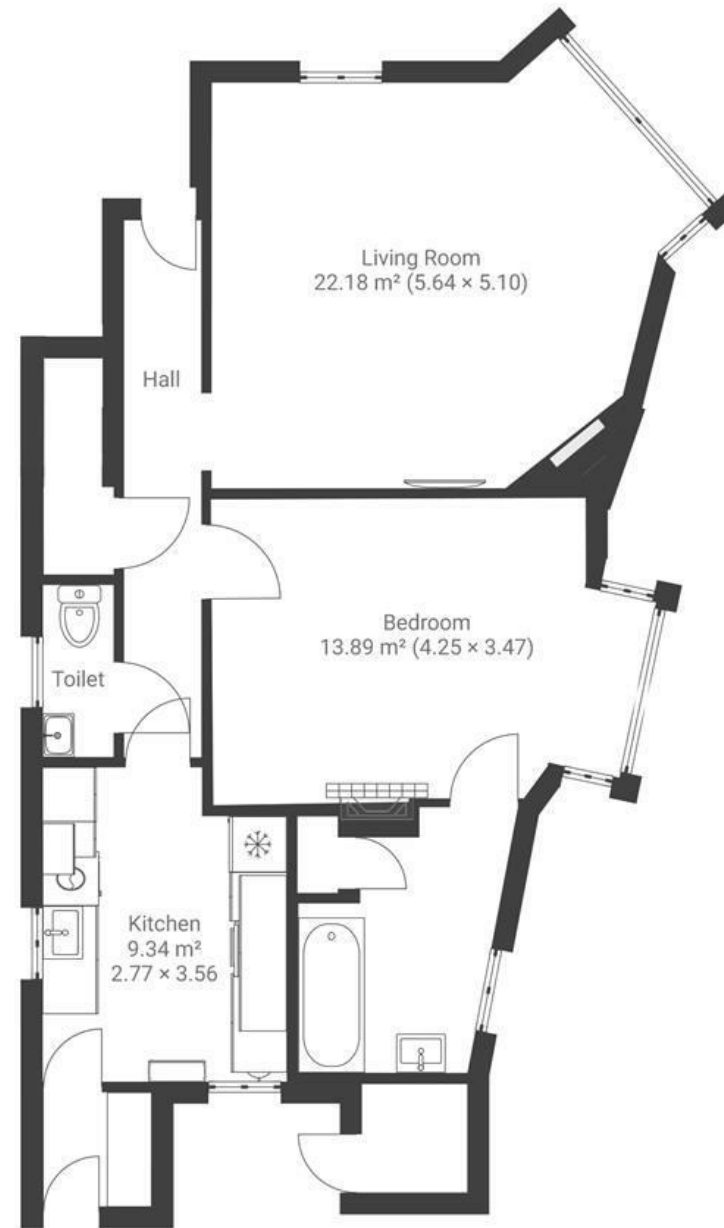
Linden Road

REDLAND

APPROXIMATE FLOOR AREA
67 SQM / 721 SQFT



GROUND FLOOR



Boardwalk

Linden Road

WESTBURY PARK, BRISTOL



£350,000



1 Bedrooms



Bristol, BS6



1 Bathrooms

7R |

"We love the large amount of natural light you get in the living room and bedroom which, when coupled with the high ceilings, give a real sense of space within the flat. The garden is a great place to sit and relax (or work!) during the summer months; in particular, the patio is a lovely spot for eating and hosting outside. We are just around the corner from the tranquil Redland Green Park, and also within 10 minutes' walk of the Downs, which is perfect for walking our dog. Being half-way between Gloucester Road and Whiteladies Road means you always have plenty of choice of places to shop, eat and drink nearby."

