

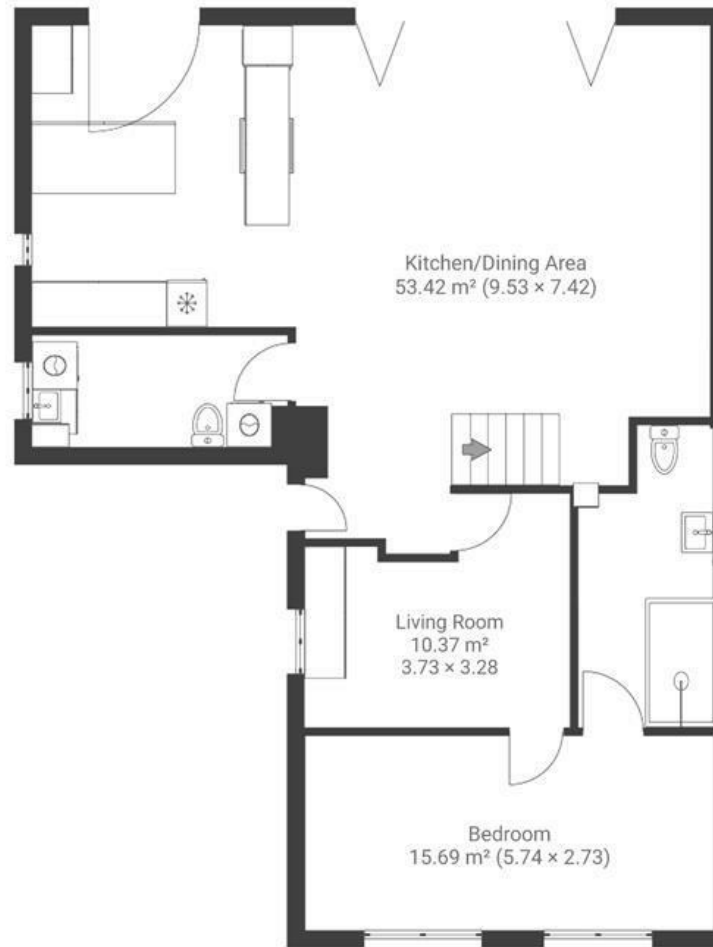
Wells Road

TOTTERDOWN

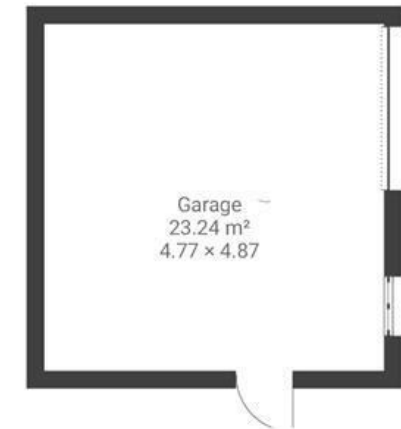
APPROXIMATE FLOOR AREA
136.1 SQM / 1464 SQFT



GROUND FLOOR



FIRST FLOOR



Boardwalk

Wells Road , BRISTOL



£535,000



3 Bedrooms



Bristol, BS4
2DF



2 Bathrooms

"Wells Road is a wonderfully easy house to live in. The excellent insulation keeps it cosy and warm throughout the winter months, and the large windows means that it has excellent natural light. The house works well for me living alone but there is plenty of room for all the family when they come to stay and it is still very comfortable. The location offers the quality of life of a village with the convenience of a large city. There is a variety of local shops, a very good and popular pizzeria as well as local pubs all in the immediate vicinity. The wonderful Arnos Vale with its wildlife and beautiful walks is close by, and there are plenty of parks all around. I also appreciate the very good public transport available as for a few months I was not able to drive due to a broken wrist. A two minute walk to the bus stop, a five minute bus ride will take me to Temple Meads Station".

