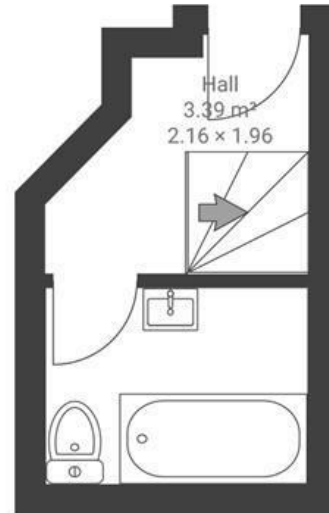


Soundwell Road

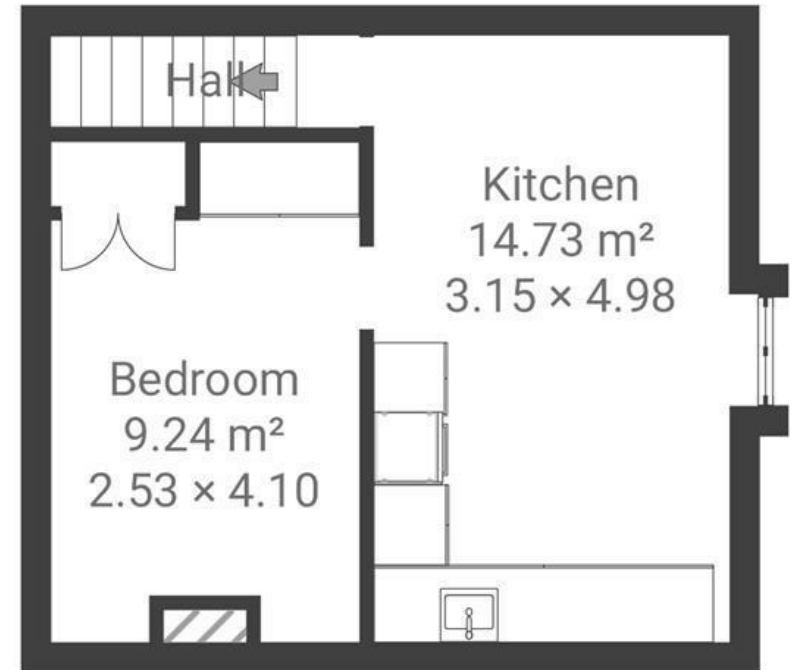
SOUNDWELL

APPROXIMATE FLOOR AREA
35.5 SQM / 382 SQFT

GROUND FLOOR



FIRST FLOOR



Boardwalk

Soundwell Road , BRISTOL

£

£160,000

zzz

1 Bedrooms



Bristol, BS16

4OR



1 Bathrooms

"Tucked away and on two levels this flat is a cosy but sophisticated living space. The skylights invite morning sun into the bedroom and dusk light and sunset views in the living space. The flat is well connected to the city centre by bike, car or public transport but benefits from a quieter residential locale."

