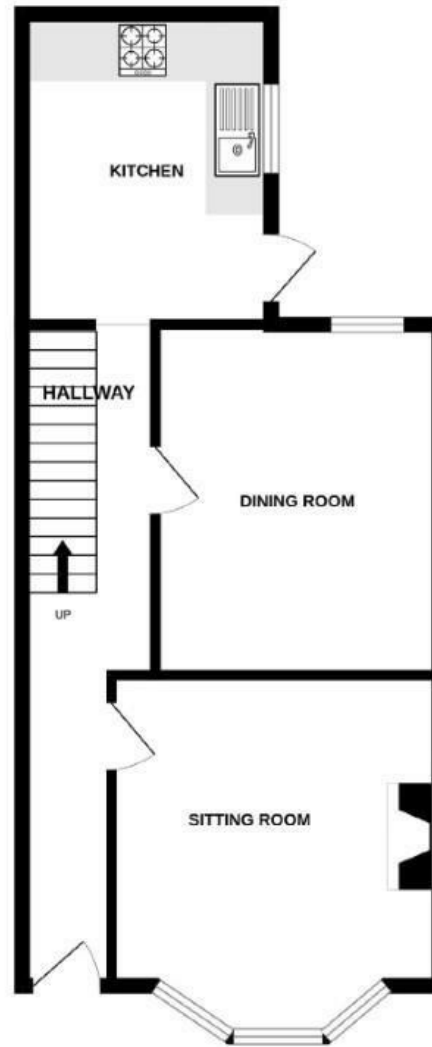


Clifton Place EASTON

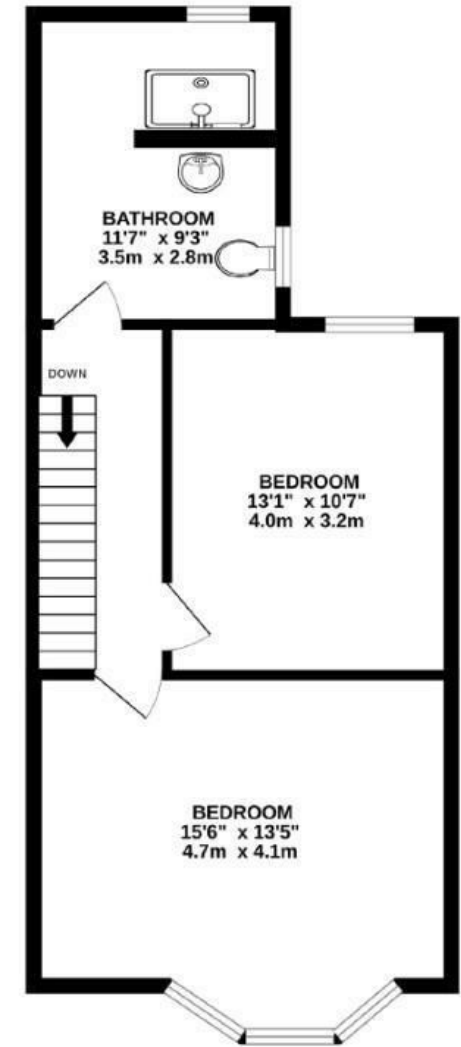
APPROXIMATE FLOOR AREA
92.1 SQM / 991 SQFT



GROUND FLOOR
494 sq.ft. (45.9 sq.m.) approx.



1ST FLOOR
497 sq.ft. (46.2 sq.m.) approx.



Boardwalk

Clifton Place

, BRISTOL



£340,000



2 Bedrooms



Bristol, BS5
09F



1 Bathrooms

"Over the years we have enjoyed watching the area grow in character. There are so many great restaurants, bars, and coffee shops in Easton and Old Market, all just a short walk away. Plus, the convenience of the bike track, great travel links, and the Easton Leisure Centre add to the appeal! As for our property, it always feels very private and not overlooked; It feels like a little oasis away from the city buzz!"

