

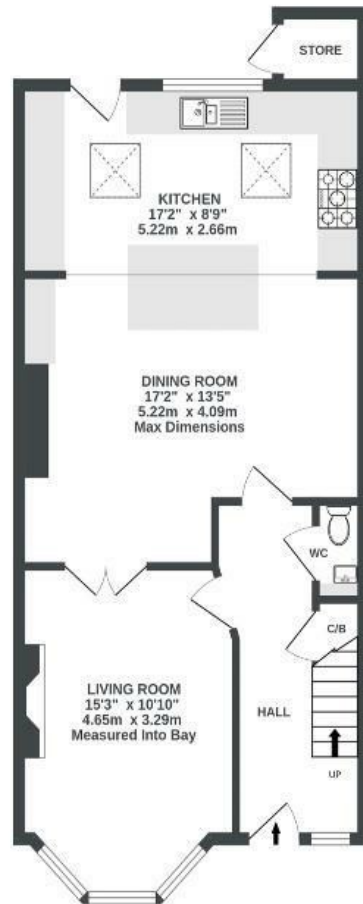
# Grove Park Road

## BRISLINGTON

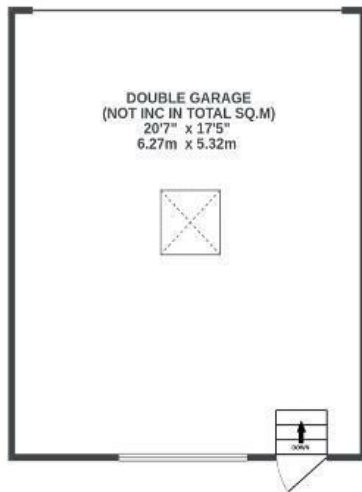
APPROXIMATE FLOOR AREA  
123.6 SQM / 1330 SQFT



GROUND FLOOR  
614 sq.ft. (57.0 sq.m.) approx.



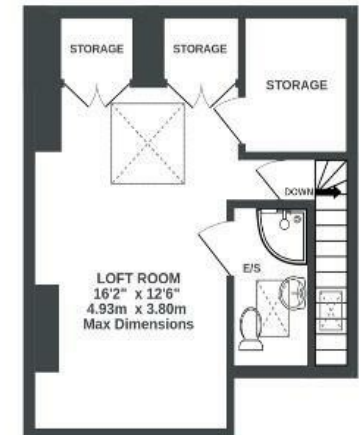
GARAGE (NOT IN SITU)  
0 sq.ft. (0.0 sq.m.) approx.



1ST FLOOR  
439 sq.ft. (40.8 sq.m.) approx.



2ND FLOOR  
278 sq.ft. (25.8 sq.m.) approx.



Illustrations are for reference purposes only, measurements are approximate, not to scale.

Boardwalk

# Grove Park Road , BRISTOL

£

£475,000

zzz

3 Bedrooms



Bristol, BS4

4.11



3 Bathrooms

*'We absolutely love the space in our home, perfect for our lifestyle of hosting and also being able to relax in front of the fire. The area is fantastic - it has a real community feel and has all amenities close by - fantastic delis and cafes to grab brunch and lunch, very good takeaways, lovely walks in woods and valleys (you wouldn't even know you were in the city!), great schools and shops! The perfect balance of a nice quite community whilst being close to amenities and close to the City.'*

