

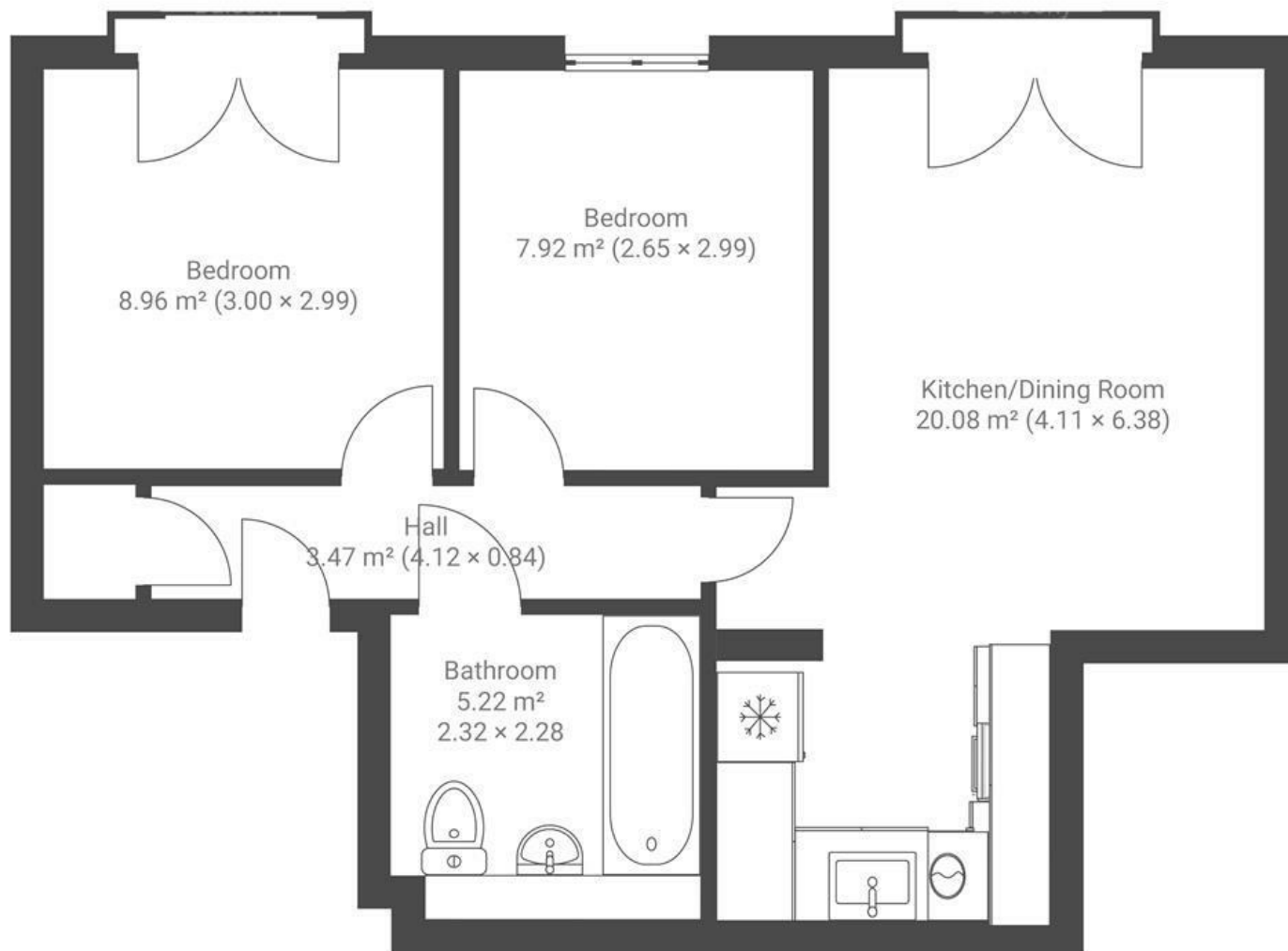
Mill Court

ST GEORGE

APPROXIMATE FLOOR AREA
49.4 SQM / 432 SQFT



GROUND FLOOR



~~Boardwalk~~

Weavers Mill

, BRISTOL



£235,000



2 Bedrooms



Bristol, BS5



1 Bathrooms

8FF

"South facing, the main living area is lucky to get bright sunlight all day - which is lovely in the summer months. We've enjoyed being super close to the river path, which we can wander down towards troopers hill, or take a further walk to Chequers Inn pub on the Hanham lock. Having the river on our doorstep has been great. Just across the river is a little Coop - which is handy to grab breakfast bits on a weekend! There's plenty of great pubs and coffee shops nearby, Loaf, 3 foot 6, Red Church and the Dark Horse to name a few."

