

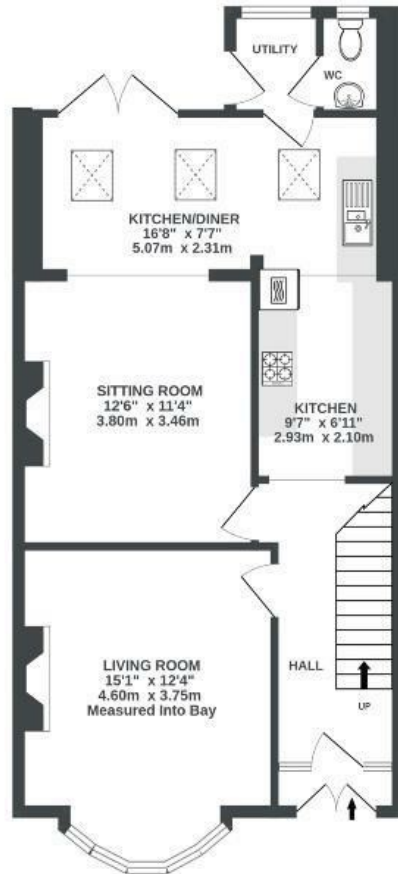
Sylvia Avenue

KNOWLE

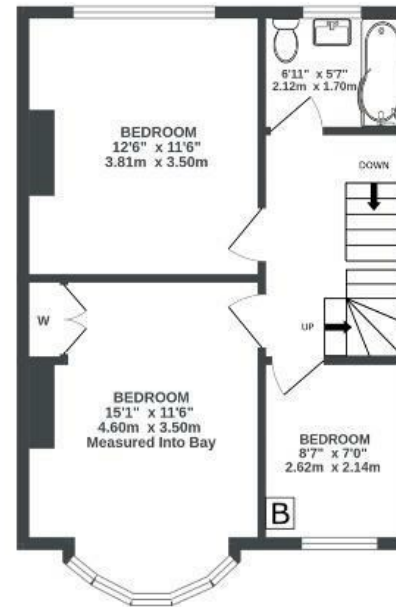
APPROXIMATE FLOOR AREA
128.3 SQM / 1381 SQFT



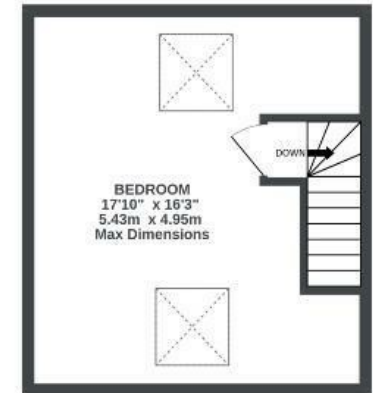
GROUND FLOOR
624 sq.ft. (57.6 sq.m.) approx.



1ST FLOOR
468 sq.ft. (43.5 sq.m.) approx.



2ND FLOOR
289 sq.ft. (26.6 sq.m.) approx.



GARAGE:
0 sq.ft. (0.0 sq.m.) approx.



Illustrations are for reference purposes only, measurements are approximate, not to scale.

Boardwalk

Sylvia Avenue

KNOWLE, BRISTOL

£

£600,000

zZz

4 Bedrooms



Bristol, BS3

5DR



2 Bathrooms

"We have loved living on Sylvia Avenue for the past 17 years and it has been such a friendly neighbourhood in which to bring up our 2 children who both attended the local Victoria Park Primary school. Having two parks so close to us has been great with amazing views across the city from Perret Park - a lovely spot to watch the sunset and hot air balloons in the summer! We are surrounded by green spaces and have enjoyed making our garden into a haven for wildlife to visit over the years."

