

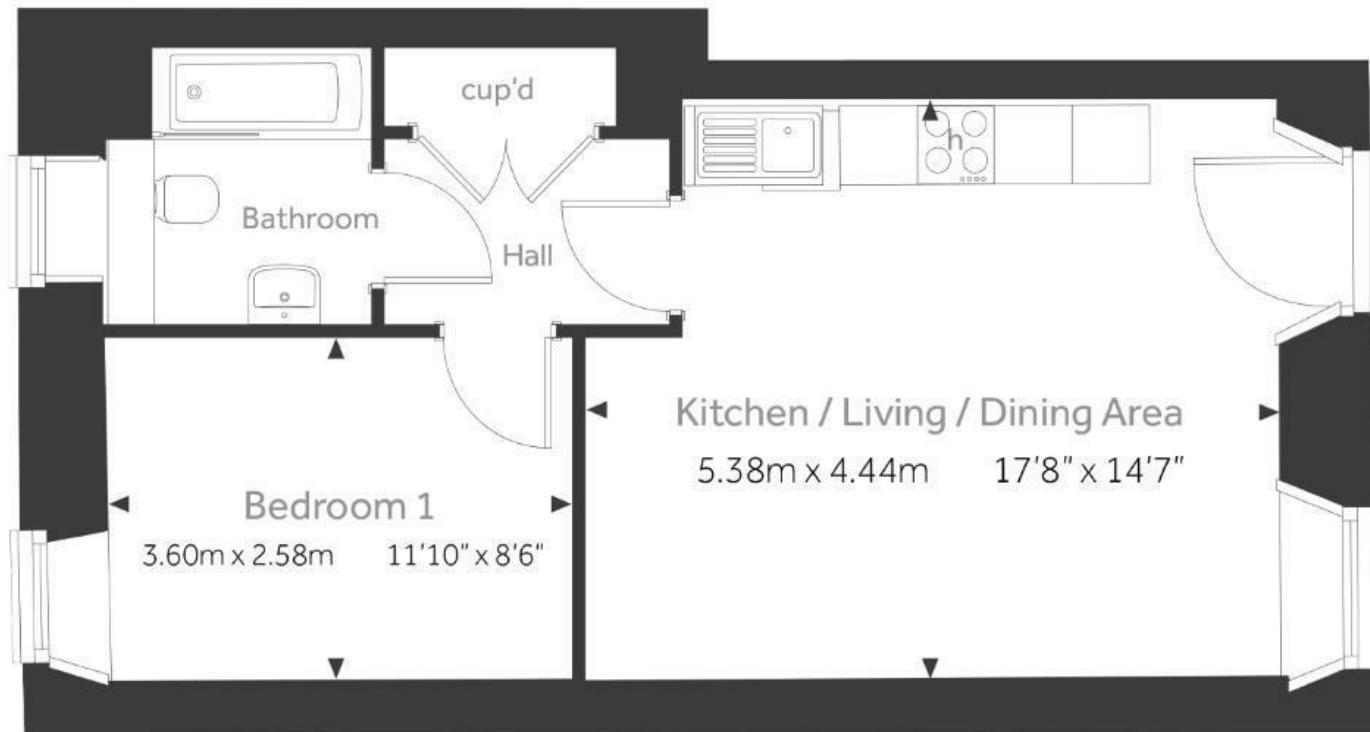
# Blackberry Hill

## FISHPONDS

APPROXIMATE FLOOR AREA  
43.29 SQM / 466 SQFT



### Ground Floor



Illustrations are for reference purposes only, measurements are approximate, not to scale.

Boardwalk

# Blackberry Hill

FISHPONDS, BRISTOL



£235,000



1 Bedrooms



Bristol, BS16



1 Bathrooms

2FN

*"The Blackberry Hill development has been curated with character firmly at the forefront, differentiating the site from other new build locations. All of the homes offer incredible ceiling heights, spacious floorplans, and large windows to maximise natural light. The site itself sits in a superb position in BS16, near plenty of green spaces, such as Snuff Mills and a short walk from the bustling Downend and Fishponds High Streets."*

