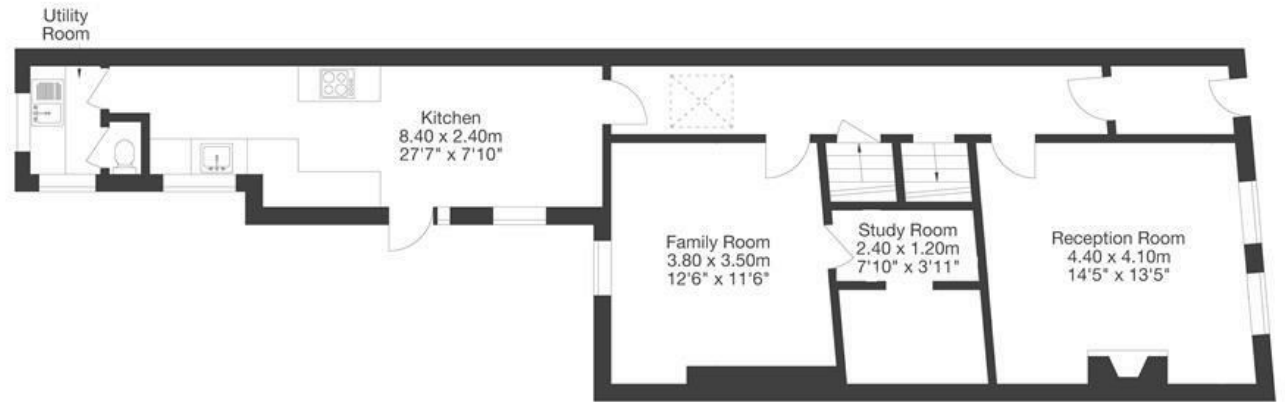


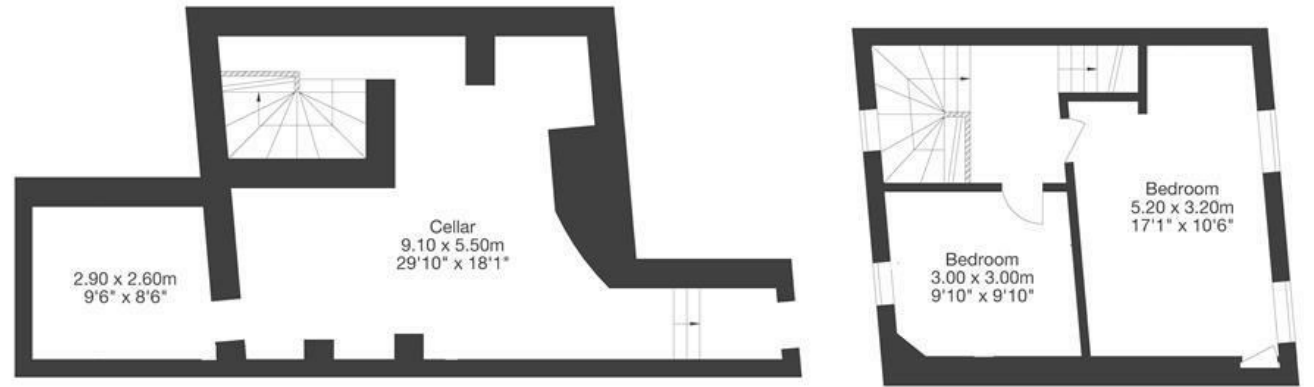
Montague Hill

KINGSDOWN

APPROXIMATE FLOOR AREA
217 SQM / 2341 SQFT

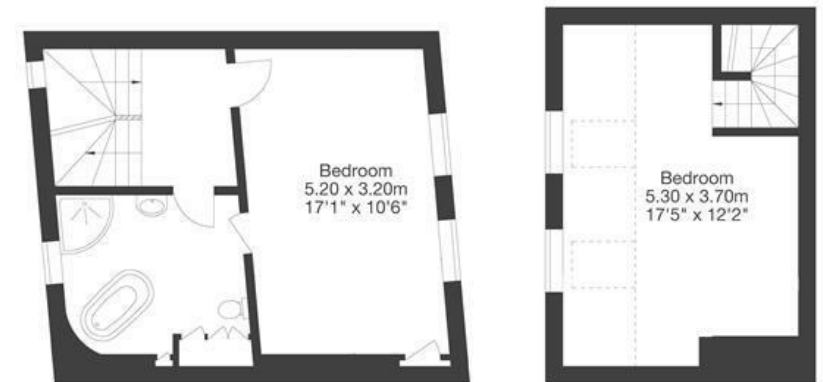


Ground Floor



Cellar

Second Floor



First Floor

Third Floor



Boardwalk

Montague Hill

KINGSDOWN, BRISTOL

£

£900,000

zzz

4 Bedrooms



Bristol, BS2

8ND



3 Bathrooms

'We have loved living in this property for many reasons. The fact that it is within close walking distance of excellent and characterful pubs, the Gloucester Road, Cabot Circus, the University, the hospitals, bus station and Clifton Triangle has been a huge advantage. You can go days without needing a car and the excellent Kingsdown residents' parking scheme is cheap and easy to use. You never tire of the beauty and character of the house and the garden with its panoramic view from the terrace.'

