

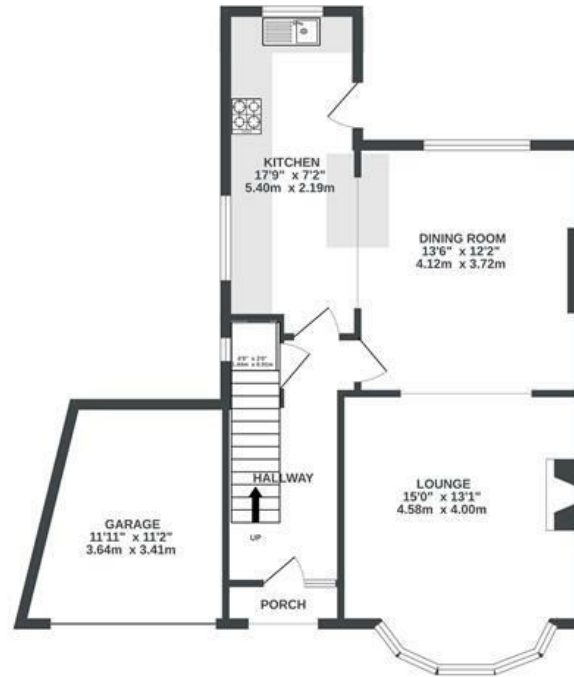
# Cleeve Hill

## DOWNEND

APPROXIMATE FLOOR AREA  
139.7 SQM / 1503 SQFT



GROUND FLOOR



FIRST FLOOR



SECOND FLOOR



Boardwalk

# Cleeve Hill

DOWNEND, BRISTOL



£625,000



4 Bedrooms



Bristol, BS16  
6HO



2 Bathrooms

*"We have absolutely loved living here, creating a home that works for all occasions...family life, hosting friends, big family gatherings, cosy nights in front of the log burner, working from home, it does it all. Bromley Heath is a wonderful supportive community; we are on the doorstep of everything you could possibly need, countryside walks, parks, pubs, all the local amenities. I hope the new owners are as happy here as we have been."*

