

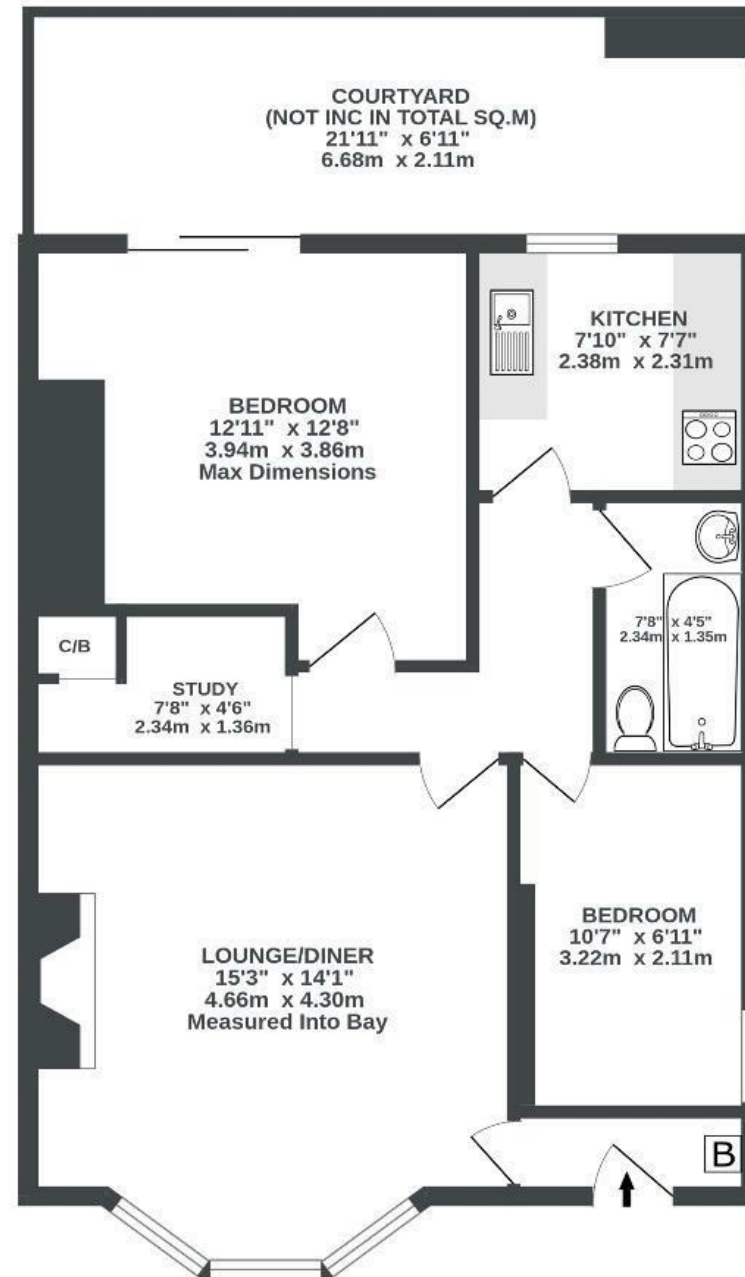
Ravenswood Road

REDLAND

APPROXIMATE FLOOR AREA
54.8 SQM / 590 SQFT



GROUND FLOOR
590 sq.ft. (54.8 sq.m.) approx.



Illustrations are for reference purposes only, measurements are approximate, not to scale.

Boardwalk

Ravenswood , BRISTOL

£

£365,000

ZZZ

2 Bedrooms



Bristol, BS6

6RN



1 Bathrooms

"The flat is so peaceful, on a leafy street right in the heart of Bristol. If you paint a fifteen minute circle around it you can walk to some of the best places Bristol has to offer. Cotham hill is just a couple of streets away with some fantastic restaurants and cafes. Whiteladies Road, Clifton, Harbourside and Gloucester Road are also within easy reach. It's hard to get bored with so many places to wander around and once you've worn yourself out it's lovely to return to the peace and quiet to relax".

