

Boardwalk

Willow, Tree Rise

HANHAM

 4 BEDROOMS

 4 BATHROOMS

REGISTER INTEREST
0117 9898 222
hello@boardwalkpropertyco.com

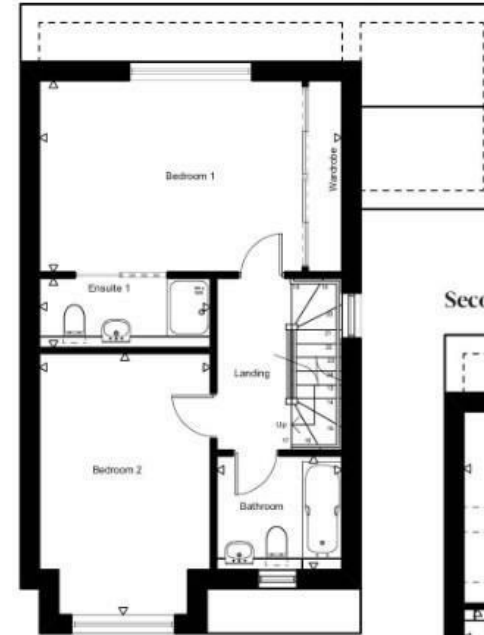


134.1 SQM
1443 SQFT

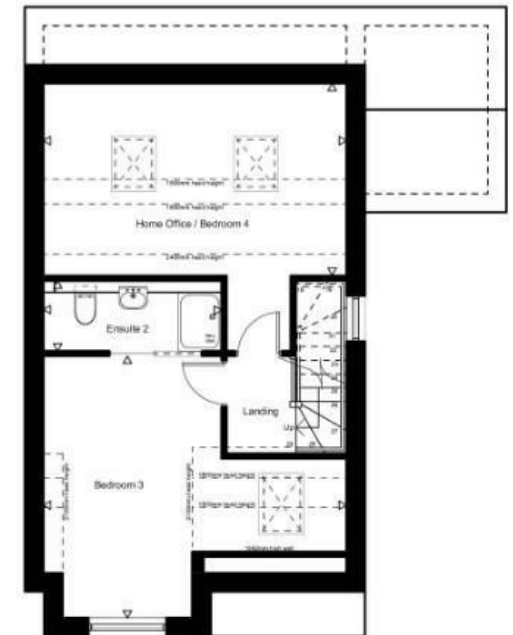
Ground floor



First floor



Second floor



Ground floor

LIVING ROOM
2.95 x 5.84m

KITCHEN / DINING
5.25 x 4.31m

WC
0.85 x 1.95m

UTILITY / HOME OFFICE
2.77 x 2.83m

First floor

BEDROOM 1
5.25 x 3.30m

ENSUITE 1
2.95 x 1.17m

BEDROOM 2
2.95 x 4.53m

BATHROOM
2.15 x 1.95m

Second floor

BEDROOM 3
5.25 x 4.53m

ENSUITE 2
3.06 x 1.17m

BEDROOM 4 / HOME OFFICE
5.25 x 3.30m

Illustrations are for reference purposes only, measurements are approximate, not to scale.

Boardwalk

Tree Rise

HANHAM, BRISTOL



£600,000



4 Bedrooms



Bristol, BS15

8GF



4 Bathrooms

With six homes now sold and new residents moved in, there are now only three homes remaining. Each of these homes are finished and ready to move in quickly. Viewings will begin on Friday 26th January for this final phases on excellent Tree Rise homes, contact Boardwalk to arrange your viewing now.

