

Boardwalk

Juniper, Tree Rise

HANHAM

BOOK A VIEWING

01174 532 985

hello@boardwalkpropertyco.com

 4 BEDROOMS

 4 BATHROOMS



Ground floor

LIVING ROOM

2.95 x 5.84m

KITCHEN / DINING

5.25 x 4.31m

WC

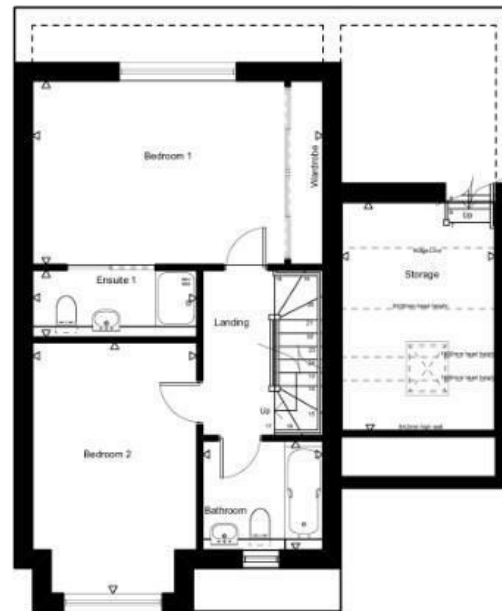
0.85 x 1.95m

UTILITY / HOME OFFICE

2.77 x 2.83m

GARAGE

3.05 x 5.08m



First floor

BEDROOM 1

5.25 x 3.30m

ENSUITE 1

2.95 x 1.17m

BEDROOM 2

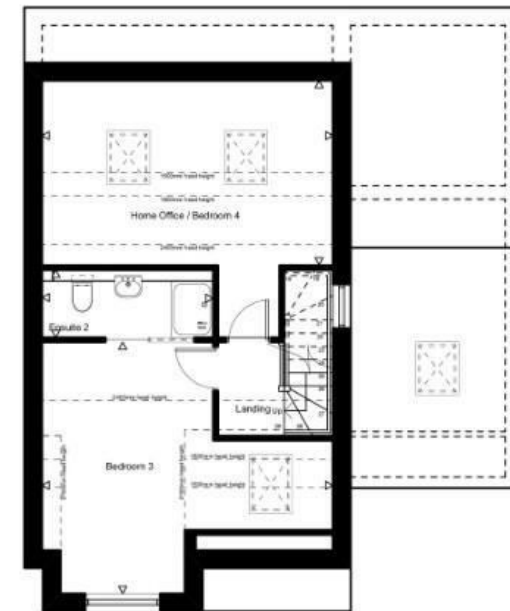
2.95 x 4.53m

BATHROOM

2.15 x 1.95m

STORE

2.77 x 4.15m



Second floor

BEDROOM 3

5.25 x 4.53m

ENSUITE 2

3.06 x 1.17m

BEDROOM 4 / HOME OFFICE

5.25 x 3.30m

144.86 SQM
1559 SQFT

Illustrations are for reference purposes only, measurements are approximate, not to scale.

Boardwalk

Magpie Bottom

KINGSWOOD, BRISTOL



£625,000



4 Bedrooms



Bristol, BS15
8HD



4 Bathrooms

With six homes now sold and new residents moved in, there are now only three homes remaining. Each of these homes are finished and ready to move in quickly. Viewings will begin on Friday 26th January for this final phases on excellent Tree Rise homes, contact Boardwalk to arrange your viewing now.

