

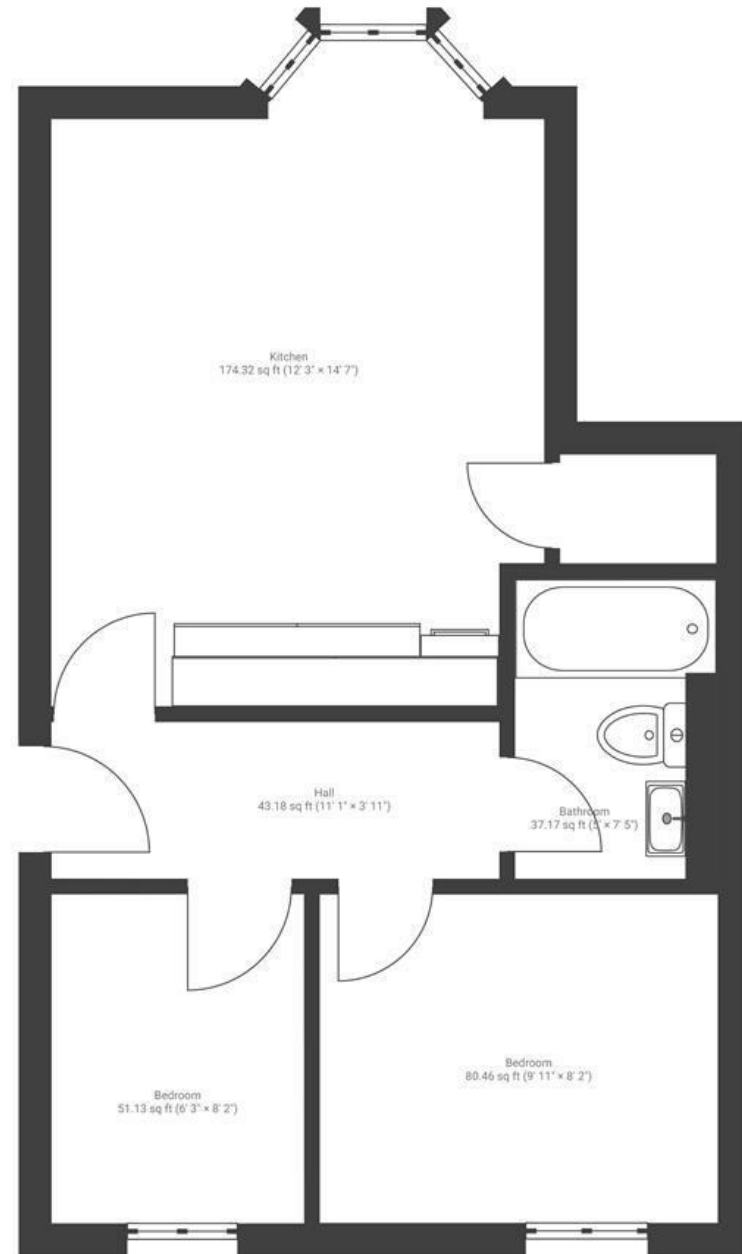
# Victoria Place

## REDFIELD

APPROXIMATE FLOOR AREA  
37.3 SQM / 402 SQFT



GROUND FLOOR



~~Boardwalk~~

# Pilemarsh

, BRISTOL



£220,000



2 Bedrooms



Bristol, BS5



1 Bathrooms

QNP

*"My main intention when renovating the flat was to create a space that felt light, bright and open. There is nothing better than when the sun shines through the bay window - it makes me very happy but it also makes the plants very happy! The kitchen/living space gets the sun all day long and is a lovely space to be in both during the day and evening! I love my home because I did all the renovation work myself. As an interior designer, I had wanted nothing more than to create my own home for the first time, having spent years designing for others. From fitting the kitchen and bathroom to painting the walls, I did it all myself, with the help of my family. We absolutely love St George and how close we are to the park and Church Road for brunch spots, bars and pubs. St George has a lovely community feel to it."*

