

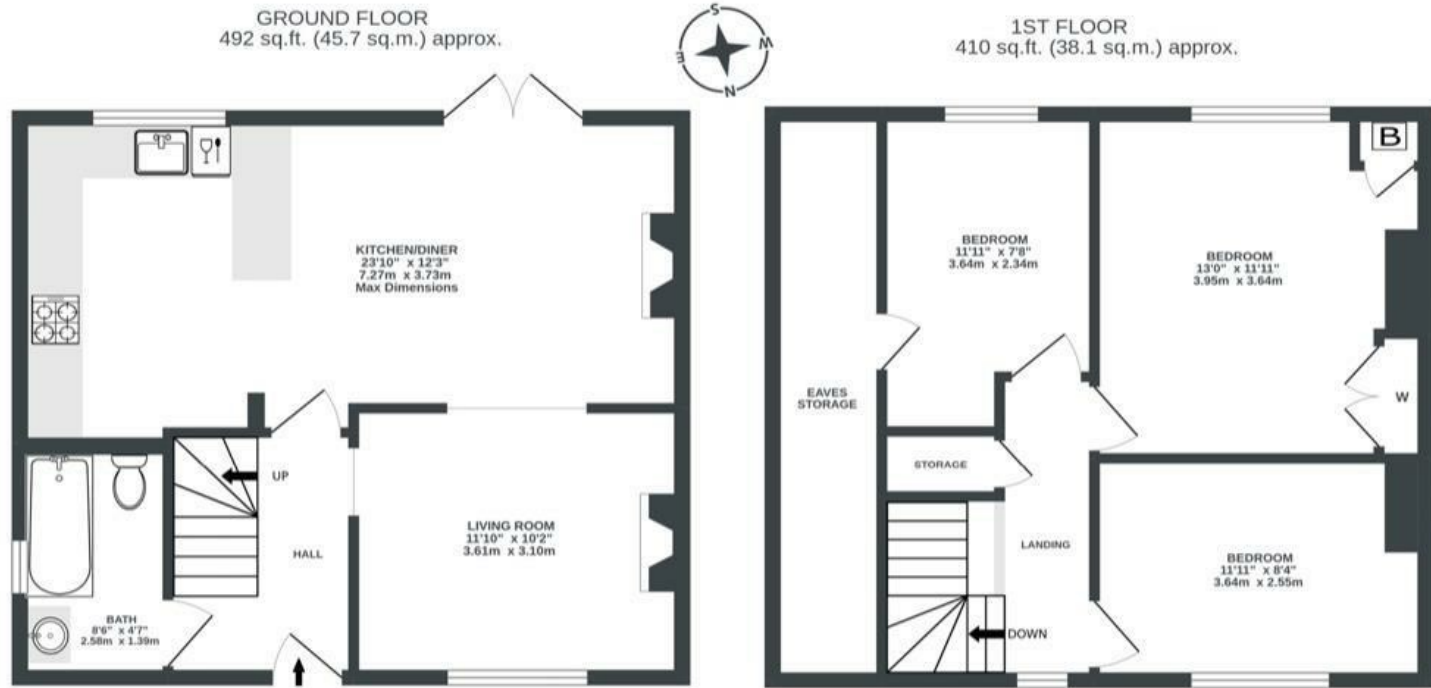
Boardwalk

The Square

KNOWLE

APPROXIMATE FLOOR AREA
83.8 SQM / 902 SQFT

BOOK A VIEWING
01174 532 985
hello@boardwalkpropertyco.com



Illustrations are for reference purposes only, measurements are approximate, not to scale.

Boardwalk

The Square

KNOWLE, BRISTOL

£

£400,000

z^z

3 Bedrooms



Bristol, BS4

2SS



1 Bathrooms

“We bought this home a little over five years ago with the view of really making it our own. From adding a new bespoke kitchen, to restoring the floorboards, and transforming the garden, we feel we have made a little oasis in Knowle Park, filling the house with artwork and plants. We will truly miss this home, but I am sure the next owners will enjoy and add to it as we have.”

