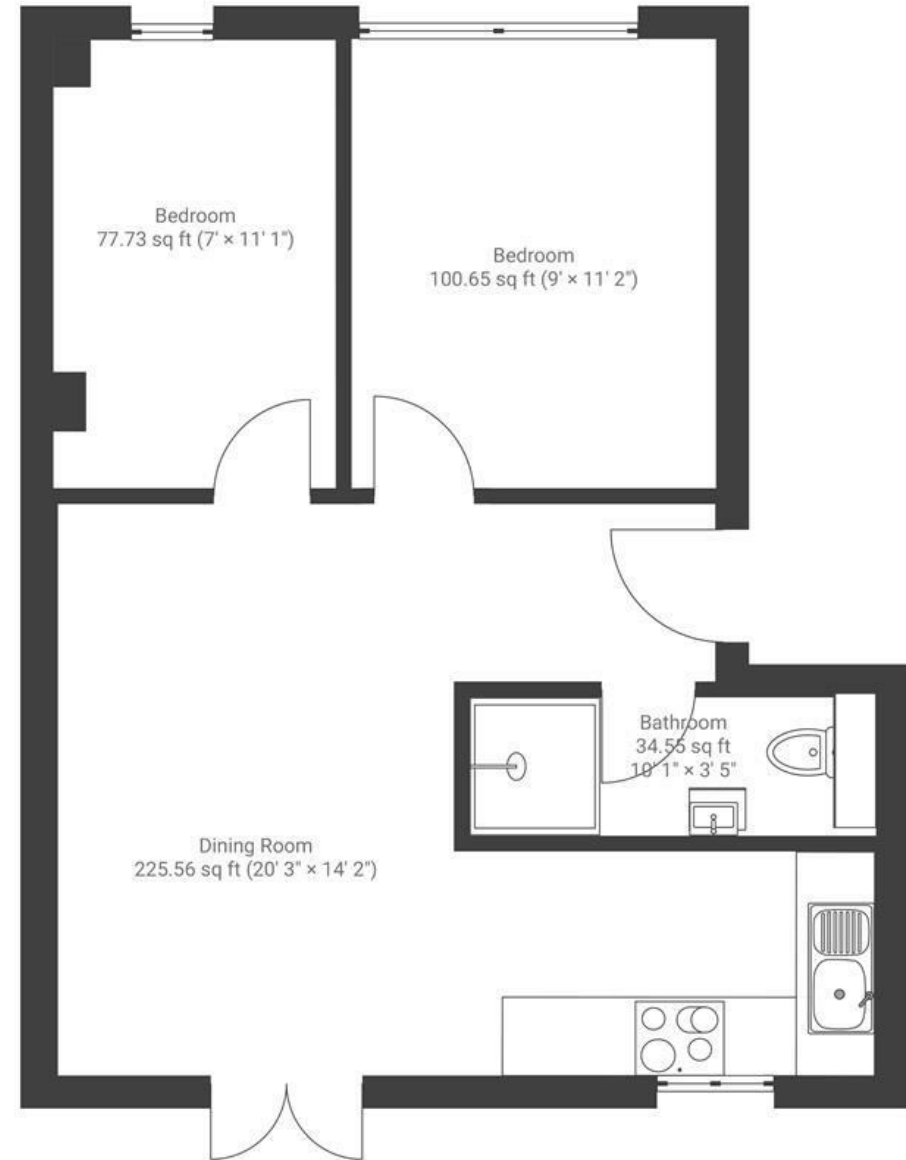


Montpelier Court

MONTPELIER

APPROXIMATE FLOOR AREA
40.6 SQM / 438 SQFT



Ground Floor

Boardwalk

Station Road

MONTPELIER, BRISTOL



£225,000



2 Bedrooms



Bristol, BS6



1 Bathrooms

5FA



"This has been the perfect home in the centre of town, everything is right on your doorstep. I'll particularly miss going to the Gallimaufry on a Sunday afternoon for the best roast in Bristol!"