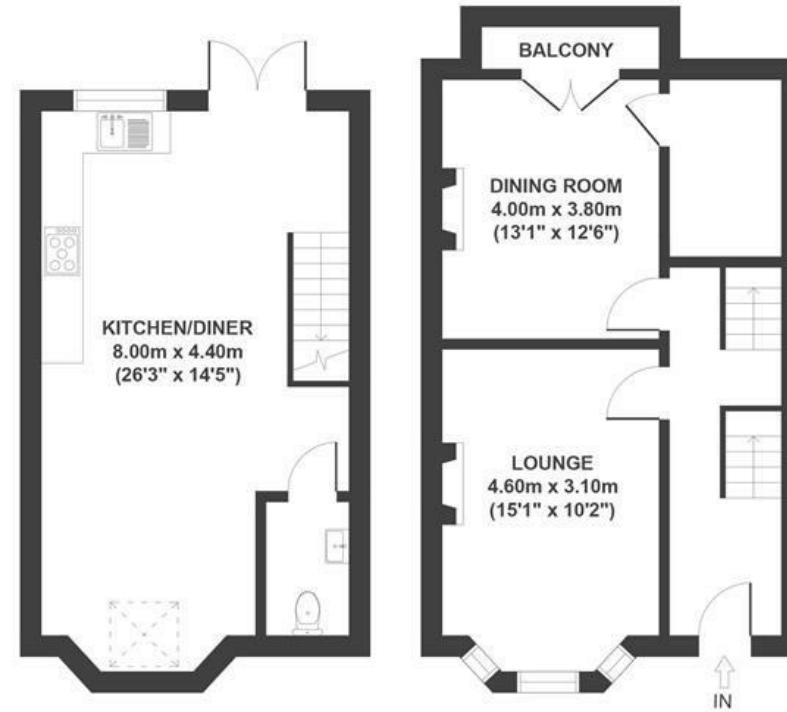


Somerset Road

KNOWLE

APPROXIMATE FLOOR AREA

146 SQM / 1571 SQFT



GROUND FLOOR

FIRST FLOOR



SECOND FLOOR

THIRD FLOOR

Boardwalk

Somerset Road

, BRISTOL



£625,000



4 Bedrooms



Bristol, BS4



2 Bathrooms

21A

"Somerset Road, backing onto the wooded Arnos Vale Cemetery and park, mixes an amazing community with a closeness to nature. We have owls, woodpeckers and ravens living behind the house. It's a short walk through the cemetery to Hillcrest Primary School and we're lucky to have Redcatch, Arnos Manor and Perrets Park on our doorstep.

We have coffee in the sun on our balcony and can see across the whole of Bristol from our loft master bedroom. Somerset Road is a really friendly area, with neighbours coming together to celebrate summer evenings, halloween, bonfire night and Christmas."

