

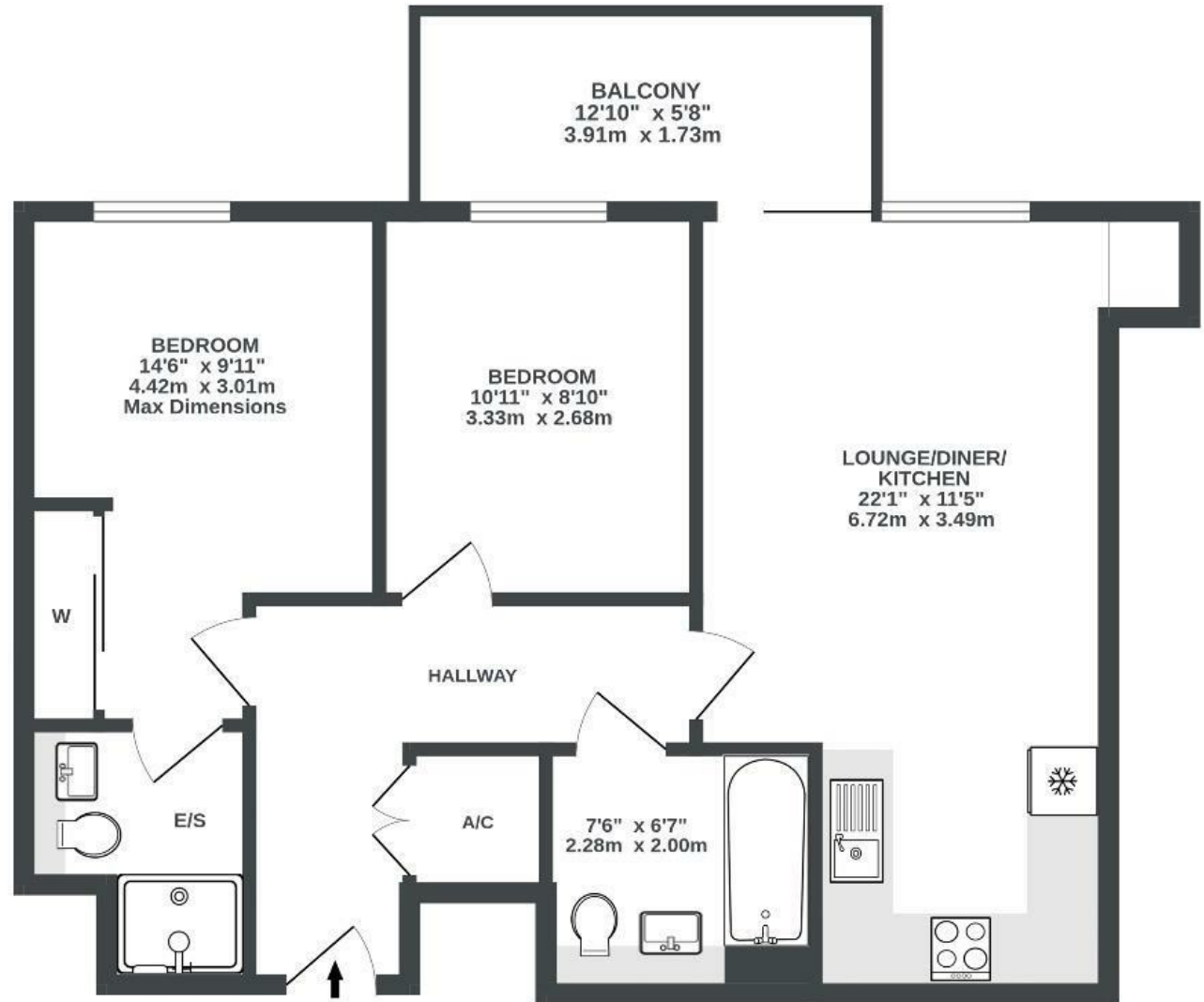
Newfoundland Way

PORTISHEAD

APPROXIMATE FLOOR AREA
60.1 SQM / 647 SQFT



SECOND FLOOR
647 sq.ft. (60.1 sq.m.) approx.



Illustrations are for reference purposes only, measurements are approximate, not to scale.

Boardwalk

Newfoundland

PORTISHEAD, BRISTOL



£290,000



2 Bedrooms



Bristol, BS20

70F



2 Bathrooms

"We have loved living with the marina so close and all the lovely cafes and restaurants nearby, it's been lovely bringing our son up in such a nice area with a great community."

