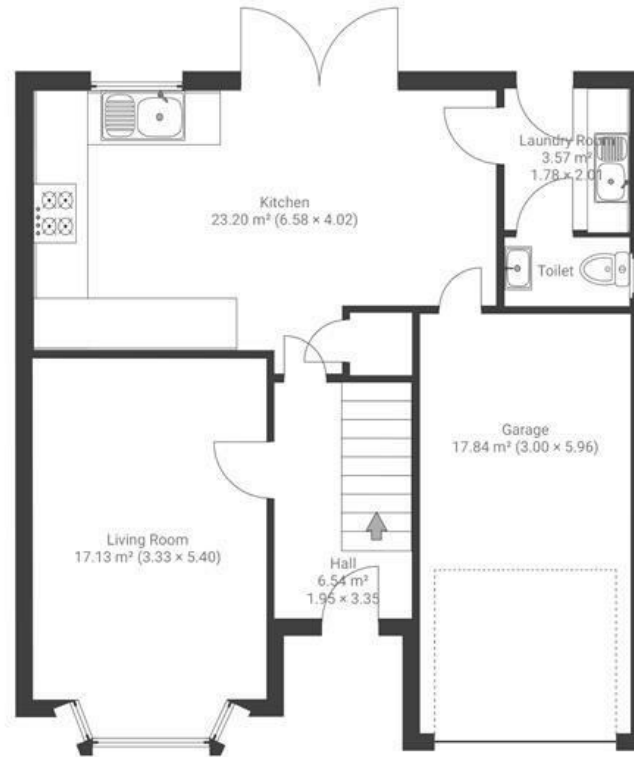


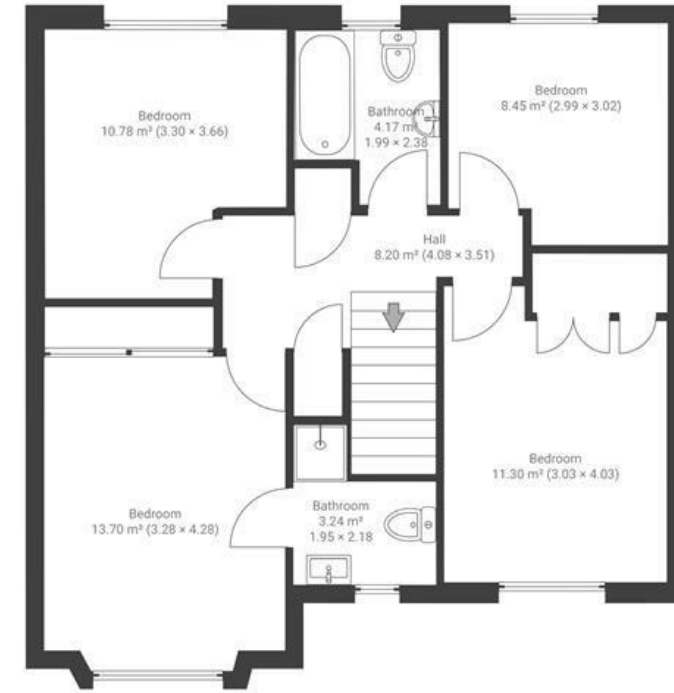
Shubb Leaze

CHESWICK VILLAGE

APPROXIMATE FLOOR AREA
135 SQM / 1453 SQFT



Ground Floor



1st Floor

Boardwalk

Shubb Leaze

CHESWICK VILLAGE, BRISTOL



£620,000



4 Bedrooms



Bristol, BS16



2 Bathrooms

1WX

"We have lived in this beautiful village community for five years and if it wasn't for downsizing we would stay here for longer. The house is in a super quiet cul-de-sac with great welcoming and supportive neighbours. We enjoy spending time in our spacious garden while having lots of privacy because of the trees we planted, which have a stunning bloom during Spring. This place is just perfect if you love to host in Spring and Summer time. We created lots of happy memories in this place that we will cherish. We love our house and we hope you do."

