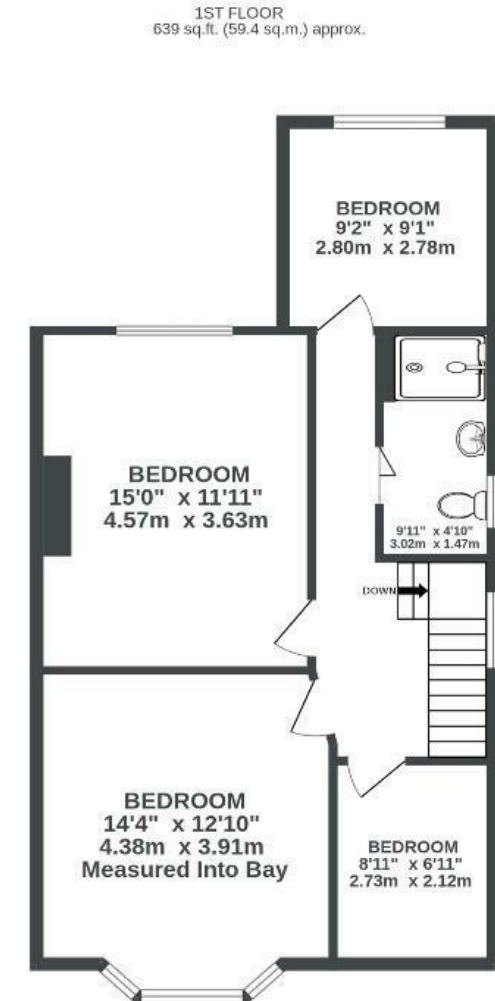


# Woodchester Road

WESTBURY-ON-TRYM

APPROXIMATE FLOOR AREA  
120 SQM / 1291 SQFT



Illustrations are for reference purposes only, measurements are approximate, not to scale.

Boardwalk

# Woodchester

WESTBURY-ON-TRYM, BRISTOL



£575,000



4 Bedrooms



Bristol, BS10



2 Bathrooms

5FX

*"We have loved living in Woodchester Road and raising our family. Now they are flying the nest its time for us to move on to something smaller. We spend our weekends walking in Badocks Wood or grabbing a coffee on Henleaze Road. It's been the ideal location to get to The Mall for shopping or further afield to the South or the Cotswolds. We will miss it dearly but hope the next family loves it as much as we did."*

