



REAL ESTATE

ESTATE AGENCY : REDEFINED



## North Farm Rise, Tunbridge Wells TN2 3DP

**£1,300 Per Calendar Month**

Beautiful modern one-bedroom apartment, available now.

Ideally located less than three miles from the historic centre of Tunbridge Wells and just one mile from Southborough, this well-presented apartment offers stylish and comfortable living. Internally, the property features a spacious open-plan kitchen and living area, finished to a high standard throughout.

The kitchen is fully fitted with a range of integrated appliances, including a fridge/freezer and electric oven. The apartment also benefits from one allocated parking space.

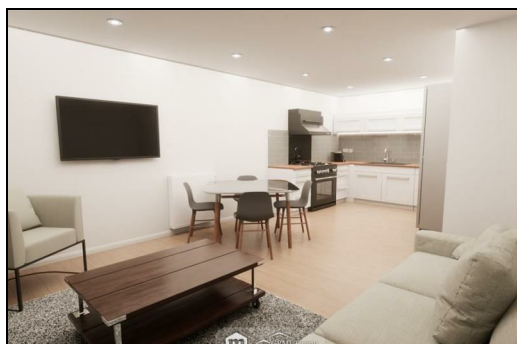
We expect this property to be very popular, so please contact us to register your interest at the earliest opportunity.

Computer-generated images are for illustrative purposes only and may be subject to change.

CR Real Estate are part The Ombudsman Redress Scheme and are a member of the Propertymark Client Money Protection Scheme. Tenant deposits are protected by the Tenancy Deposit Scheme. For more information, please contact us.

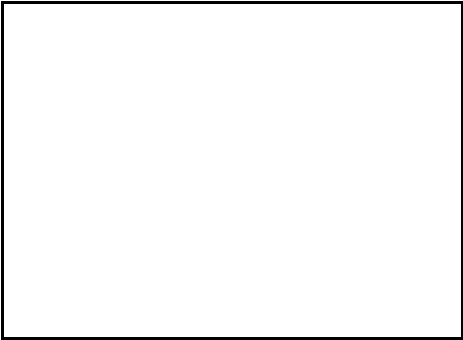
Client Money Protection is provided by: Client Money Protect. Scheme Ref: CMP004209

Independent redress is provided by: The Property Ombudsman (TPO). Membership Number: E01687



Energy Efficiency Rating		
	Current	Potential
Very energy efficient - lower running costs		
(92 plus) <b>A</b>		
(81-91) <b>B</b>		
(69-80) <b>C</b>		
(55-68) <b>D</b>		
(39-54) <b>E</b>		
(21-38) <b>F</b>		
(1-20) <b>G</b>		
Not energy efficient - higher running costs		
England & Wales		
EU Directive 2002/91/EC		

Environmental Impact (CO <sub>2</sub> ) Rating		
	Current	Potential
Very environmentally friendly - lower CO2 emissions		
(92 plus) <b>A</b>		
(81-91) <b>B</b>		
(69-80) <b>C</b>		
(55-68) <b>D</b>		
(39-54) <b>E</b>		
(21-38) <b>F</b>		
(1-20) <b>G</b>		
Not environmentally friendly - higher CO2 emissions		
England & Wales		
EU Directive 2002/91/EC		



ESTATE AGENCY : REDEFINED