



REAL ESTATE

ESTATE AGENCY : REDEFINED

CR REAL ESTATE
ESTATE AGENCY : REDEFINED



James Street, Sheerness ME12 2QE

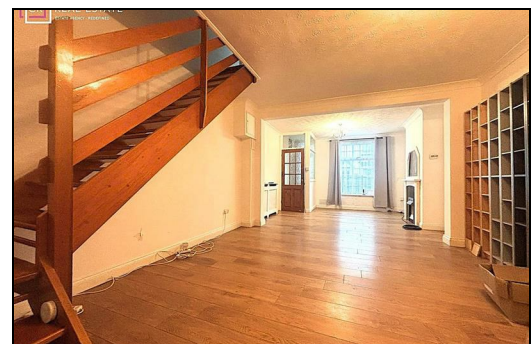
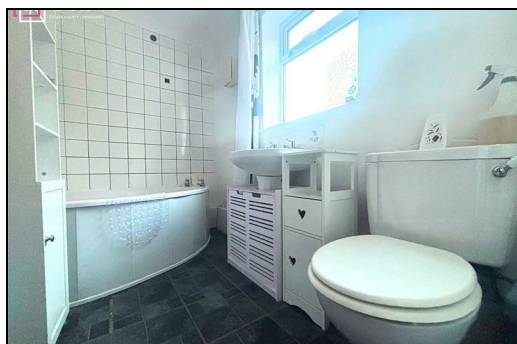
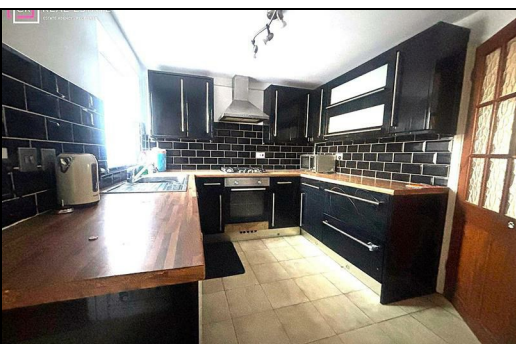
£1,250 Per Calendar Month

OFFERED WITH THE ZERO DEPOSIT SCHEME. This three-bedroom mid-terrace home is ideally located close to Sheerness Town Centre and just moments from the beach. Available now, the property features a spacious lounge/diner, a fitted kitchen, and a family bathroom all on the ground floor. Upstairs, the first floor comprises three well-proportioned, separate bedrooms. Externally, there is an enclosed rear garden, perfect for relaxing or entertaining.

CR Real Estate are part The Ombudsman Redress Scheme and are a member of the Propertymark Client Money Protection Scheme. Tenant deposits are protected by the Tenancy Deposit Scheme. For more information, please contact us.

Client Money Protection is provided by: Client Money Protect. Scheme Ref: CMP004209

Independent redress is provided by: The Property Ombudsman (TPO). Membership Number: E01687



- Entrance porch
- Living Room

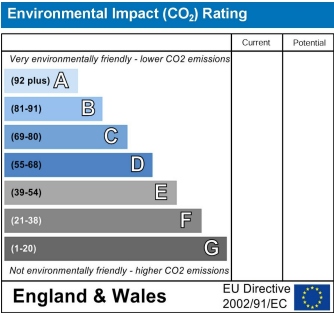
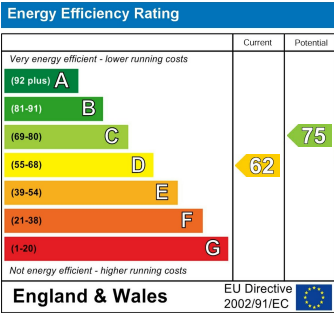
26'3 x 13'1 (8.00m x 3.99m)
- Kitchen

13'1 x 8'5 (3.99m x 2.57m)
- Family Bathroom
- Bedroom

13'1 x 12'5 (3.99m x 3.78m)
- Bedroom

10'4 x 8'4 (3.15m x 2.54m)
- Bedroom

9'8 x 8'2 (2.95m x 2.49m)



ESTATE AGENCY : REDEFINED

