



**Tonbridge Road**  
Kent | ME16 8JN



# Tonbridge Road

## Maidstone, Kent, ME16 8JN

Being Sold via Secure Sale online bidding. Terms & Conditions apply. Starting Bid £350,000

A substantial four/five-bedroom period property, ideally located close to Maidstone town centre, offered for sale with tenants in situ and generating a current rental income of £25,200 per annum.

The well-proportioned accommodation comprises three reception rooms on the ground floor, providing flexible living and entertaining space. The first floor offers three bedrooms, while a further room is located in the converted loft, suitable for use as an additional bedroom or home office. The property also benefits from a converted cellar, adding further versatile space.

Externally, the property features a good-sized rear garden, enhancing its appeal to tenants. This is an excellent opportunity for investors seeking an established rental property with immediate income in a central and convenient location.

Guide Price £350,000





## Reception Room One

12'1 x 11'9 (3.68m x 3.58m)

## Dining Room

14'3 x 9'6 (4.34m x 2.90m)

## Kitchen

12'10 x 6'9 (3.91m x 2.06m)

## Reception Two

15'11 x 10'7 (4.85m x 3.23m)

## Bedroom

16'1 x 15'7 (4.90m x 4.75m)

## Bedroom

9'5 x 11'11 (2.87m x 3.63m)

## Bathroom

## Bedroom

15'7 x 10'7 (4.75m x 3.23m)

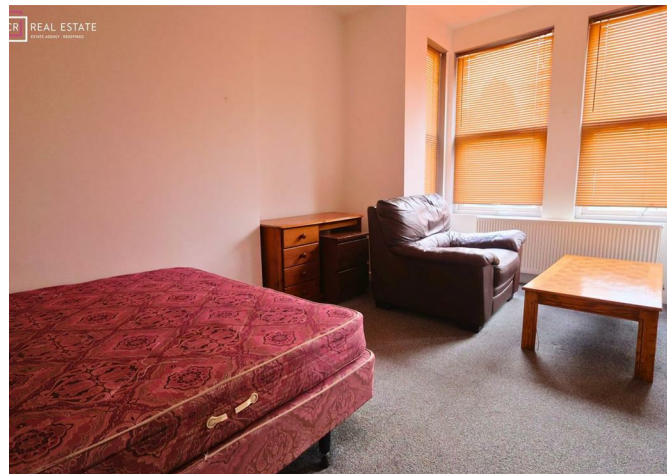
## En Suite

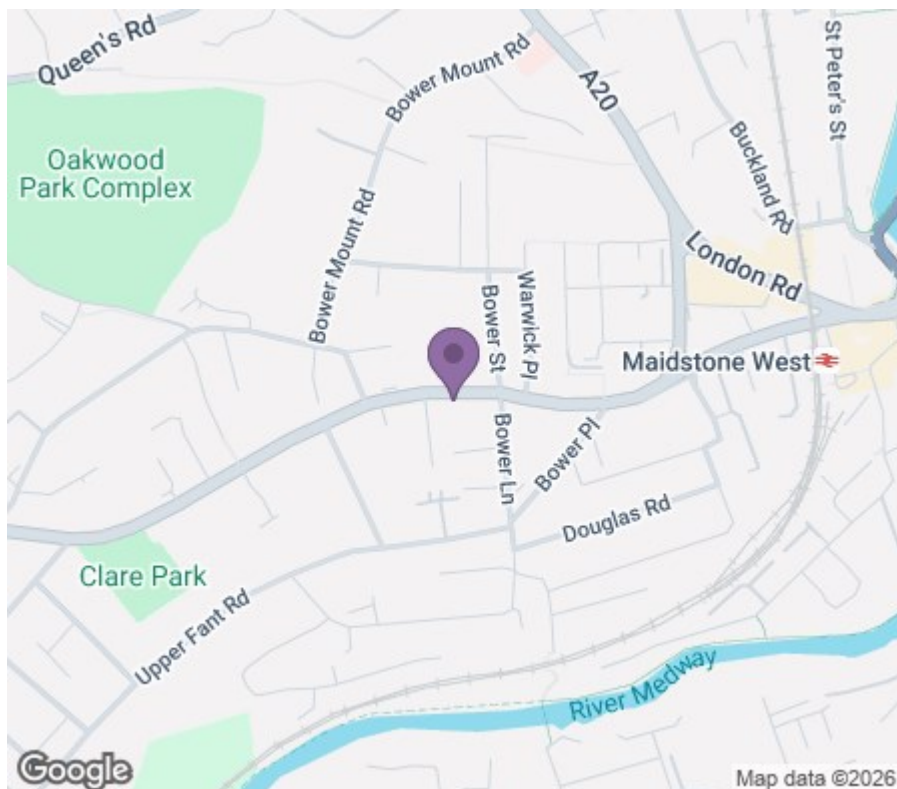
## Bedroom

10'10 x 9'9 (3.30m x 2.97m)

## Converted Cellar

13'6 x 6'5 (4.11m x 1.96m)

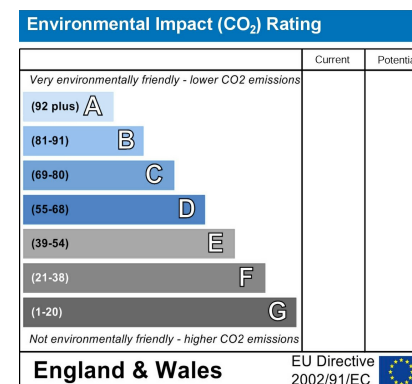
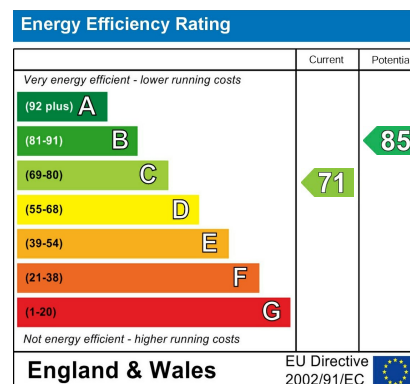




18 - 20 High Street  
Gillingham  
Kent  
ME7 1BB

01634 570057

www.crralestate.co.uk  
twitter.com/CRRealEstateUK  
facebook.com/CRRealEstateUK



CR Real Estate endeavour to maintain accurate depictions of properties in Virtual Tours, Floor Plans and descriptions, however, these are intended only as a guide and purchasers must satisfy themselves by personal inspection.